



GROUNDWATER RESOURCES ASSOCIATION  
OF CALIFORNIA

## Groundwater Law Conference

June 1, 2007  
San Francisco, CA

Hotel Information – Directions

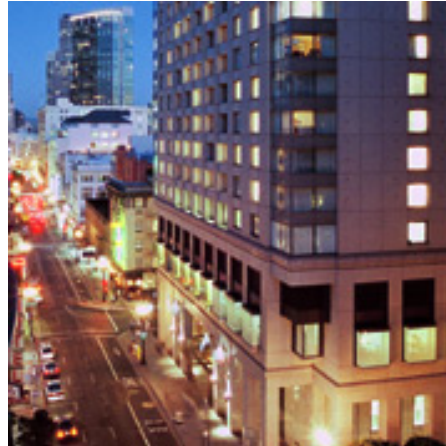
### **HOTEL INFORMATION**

#### **Nikko Hotel San Francisco**

222 Mason Street

San Francisco, CA 94102

Tel: (415) 394-1111 • Fax: (415) 394-1179



Hotel Nikko San Francisco is a sanctuary of serenity in the midst of one of America's most vibrant cities. Its warm demeanor, soothing comfort and impeccable service make it a distinctive destination. Ideally located in the very heart of the city, Hotel Nikko is a short walk from Moscone Center and the financial district as well as the fine shops, theaters and restaurants at Union Square. Hotel Nikko offers valet parking for the day of your meeting. Convenient valet parking is located in the Hotel's Porte Cochere at \$10.00 per hour (maximum of \$40.00 per 24-hour period). Please note that the Nikko Hotel garage has limited spaces and this rate is based on availability. Additional self-parking is available across the street.

### **INDIVIDUAL RESERVATIONS:**

The Nikko Hotel San Francisco has set aside a block of sleeping rooms for GRA that is available on a first come, first serve basis at the rate of \$229 plus tax per night for single occupancy. **The deadline for making hotel reservations is May 5, 2007.** Reservations made after May 5, 2007, will only be accepted at the prevailing hotel rate, on a space available basis. Please make your reservation by calling (415) 394-1111 and identifying yourself as an attendee of the Groundwater Resources Association Conference.

### **DIRECTIONS:**

Driving Directions from San Francisco International Airport: Exit San Francisco International Rental Car Center and proceed North on US-101 for 11 miles. Take I-80 toward Bay Bridge/Oakland/Seventh St./US-101 North. Exit at Seventh Street. Proceed to Folsom Street and turn right, turn left on Fifth Street, continue on fifth street, which becomes Cyril Magnin Street after you pass Market Street. Turn left on Ellis Street and then turn right into Hotel Nikko San Francisco's parking and valet entrance.

BART Information from San Francisco (SF) International Airport: There is a BART station located in the International Terminal at SF International Airport. If you are arriving on a domestic flight, simply take the airport's automated people mover, AirTrain, to the International Terminal. It is also a short walk from the domestic terminals at the BART station. Simply follow the signs. From SF International Airport, take any SF train to the Powell Street station. From the Powell Street station, walk up Powell Street three blocks to O'Farrell Street and then turn left a half block to the Hotel Nikko O'Farrell Street entrance.

Driving Directions from Oakland International Airport: Exit Oakland International Airport on Airport Drive. Turn Right onto Hengenberger Road for less than one mile. Take the I-880 N ramp toward downtown Oakland.

Proceed on I-880 for nearly 9 miles. Take I-80 W exit on the left toward San Francisco/Bay Bridge. Merge onto I-80 W and go southwest for 6 miles. You will pay a toll at the Bay Bridge. Exit via ramp at the sign reading Fifth Street to Golden Gate Bridge and US-101 N. Continue on Fifth Street, which becomes Cyril Magnin Street after you pass Market Street. Turn left on Ellis Street and the right into Hotel Nikko San Francisco parking and valet entrance.

BART Information from Oakland International Airport: It is relatively easy to take BART from Oakland International Airport to Hotel Nikko SF. AIRBART buses leave approximately every 15 minutes from each airport terminal to the Coliseum BART station. From the Coliseum Station, go the BART ticket machines and purchase a ticket to the Powell Street station. Insert your ticket in the automatic gates and take the escalator to the platforms on the second level. Take any SF train to Powell Street station. (After you leave the Bay tunnel, Powell Street is the third stop.) From the Powell Street station, walk up Powell Street three blocks to O'Farrell Street and then turn left a half block to the Hotel Nikko O'Farrell Street entrance.

Driving Directions from North Bay: Take US-101 south toward San Francisco, cross the Golden Gate Bridge (toll); turn right onto Van Ness Avenue/US-101; turn left onto O'Farrell Street; turn right onto Mason Street; turn left onto Ellis Street and the left into Hotel Nikko San Francisco's parking and valet entrance.