

Stream Depletion from an Ecological Perspective

August 29, 2017

Kristal Davis Fadtko, Senior Environmental Scientist
California Department of Fish and Wildlife



Regulatory Authority

- CDFW is designated as trustee for California's fish and wildlife (FGC §711.7) and has jurisdiction over the conservation, protection, and management of fish, wildlife, native plants, and habitat necessary for biologically sustainable populations (FGC §1802).
- CDFW is always a trustee agency when projects may affect fish, wildlife, or their habitats (CEQA Guidelines 15386(a)).
- CDFW can authorize take of species listed as endangered, threatened, candidate, or a rare plant, if that take is incidental to otherwise lawful activities and if certain conditions are met (FGC §2081(b)).

Lake and Streambed Alteration

Fish and Game Code section 1602 requires an entity to notify CDFW prior to commencing any activity that may do one or more of the following:

- Substantially divert or obstruct the natural flow of any river, stream or lake;
- Substantially change or use any material from the bed, channel or bank of any river, stream, or lake; or
- Deposit debris, waste or other materials that could pass into any river, stream or lake.

CDFW requires an LSA Agreement when it determines that the activity may substantially adversely affect existing fish or wildlife resources

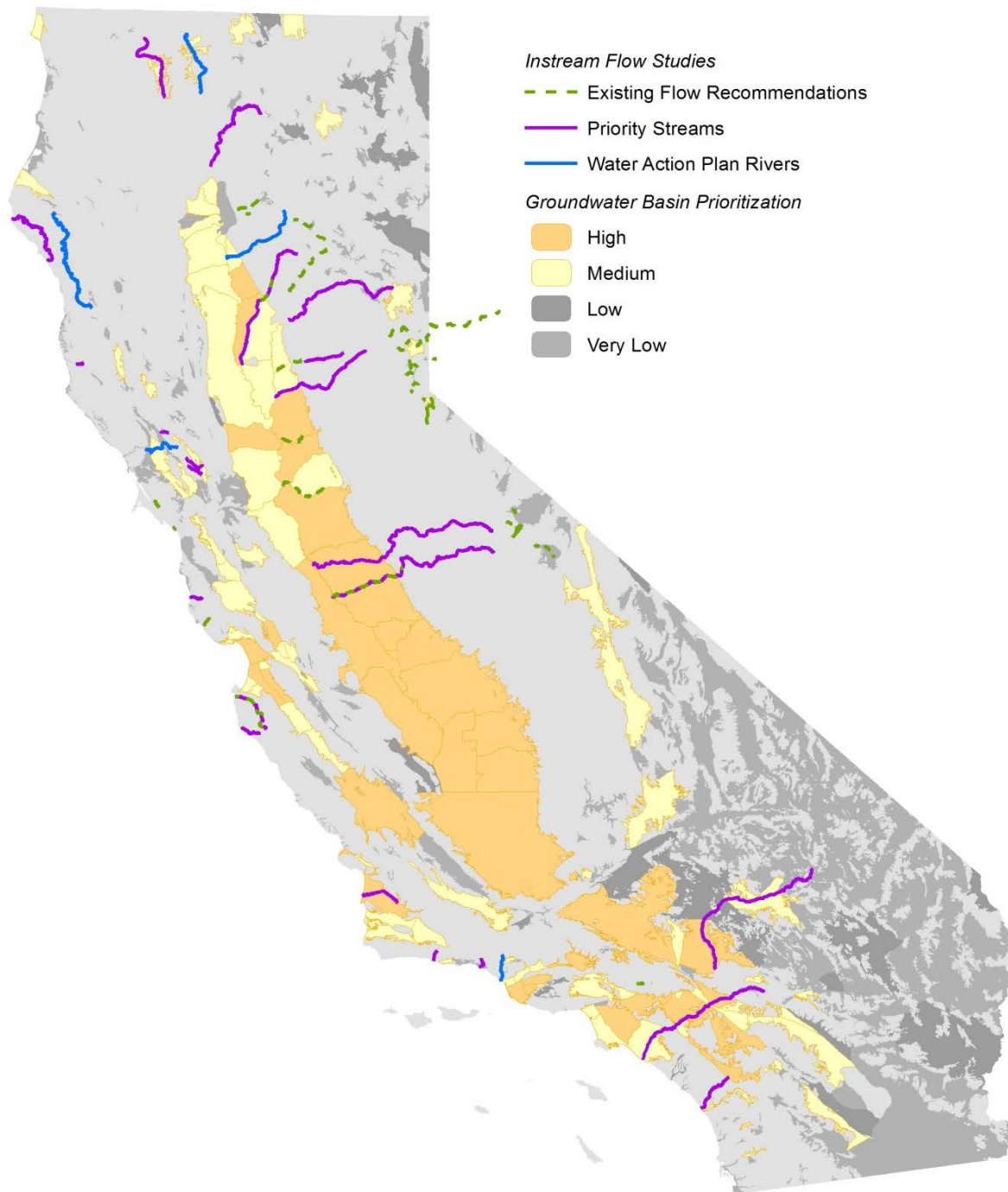
Instream Flow Program

PRC §10000-10005 – mandated to identify minimum flow levels

Instream flow criteria:

A regime of varying water flow and levels to protect fish and wildlife and the habitats that support them





Cannabis Program

Ensure the individual and cumulative effects of water diversion and discharge associated with cannabis cultivation do not affect instream flows needed for fish spawning, migration, and rearing, and flows needed to maintain natural flow variability.

State Water Board Draft Cannabis Cultivation Policy sets:

- Wet Season Instream Flow Requirements (Nov-March)
- Dry Season Low Flow Threshold (April – Oct)

Interconnected SW-GW

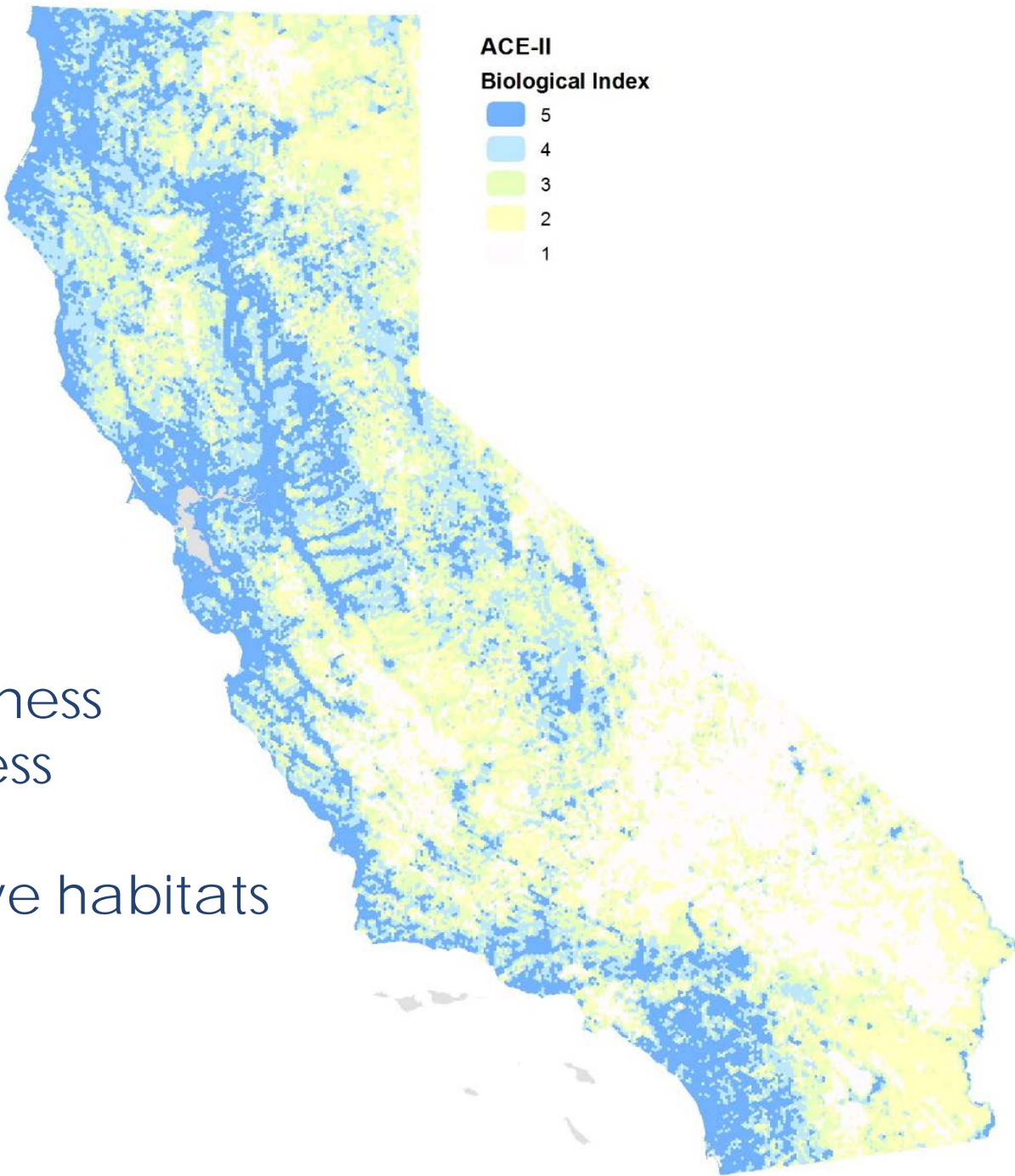
- California Wetland Conservation Policy - ensure no overall net loss and achieve a long-term net gain in the quantity, quality, and permanence of wetland acreage and values in California
- The Fish and Game Commission Wetland Resources Policy – provide for the protection, preservation, restoration, enhancement and expansion of wetland habitat in California



Areas of Conservation Emphasis

Biological Index:

- Native species richness
- Rare species richness
- “Irreplaceability”
- Presence of sensitive habitats



Kristal.Davis-Fadtke@wildlife.ca.gov

[https://www.wildlife.ca.gov/Conservation/Watersheds/](https://www.wildlife.ca.gov/Conservation/Watersheds/Groundwater)
[Groundwater](https://www.wildlife.ca.gov/Conservation/Watersheds/Groundwater)