

# Mutual Benefits of GSA and Remediator Cooperation on Groundwater Basin Health and Sustainability

Jason House, CG, PG  
Christy Kennedy, CHG, PE





# Presentation Outline



Requirements

---

Benefits of partnership between  
agencies and remediators

---

Engagement



# SGMA requires GSAs to consider all groundwater interests within the basin

What is a remediator?

---

So why do you need to reach out?

---



# Benefits to GSAs in partnership with Remediators

Tools remediation sites represent/have access to

- Monitoring networks
- Boring logs to support Hydrogeologic Conceptual Model
- Water level and quality data
- Models, flow/transport, particle tracking, geochemical
- Aquifer response to pumping/injection; pumping tests



# GSAs have access to a number of resources without further engagement

## ■ Publicly accessible resources

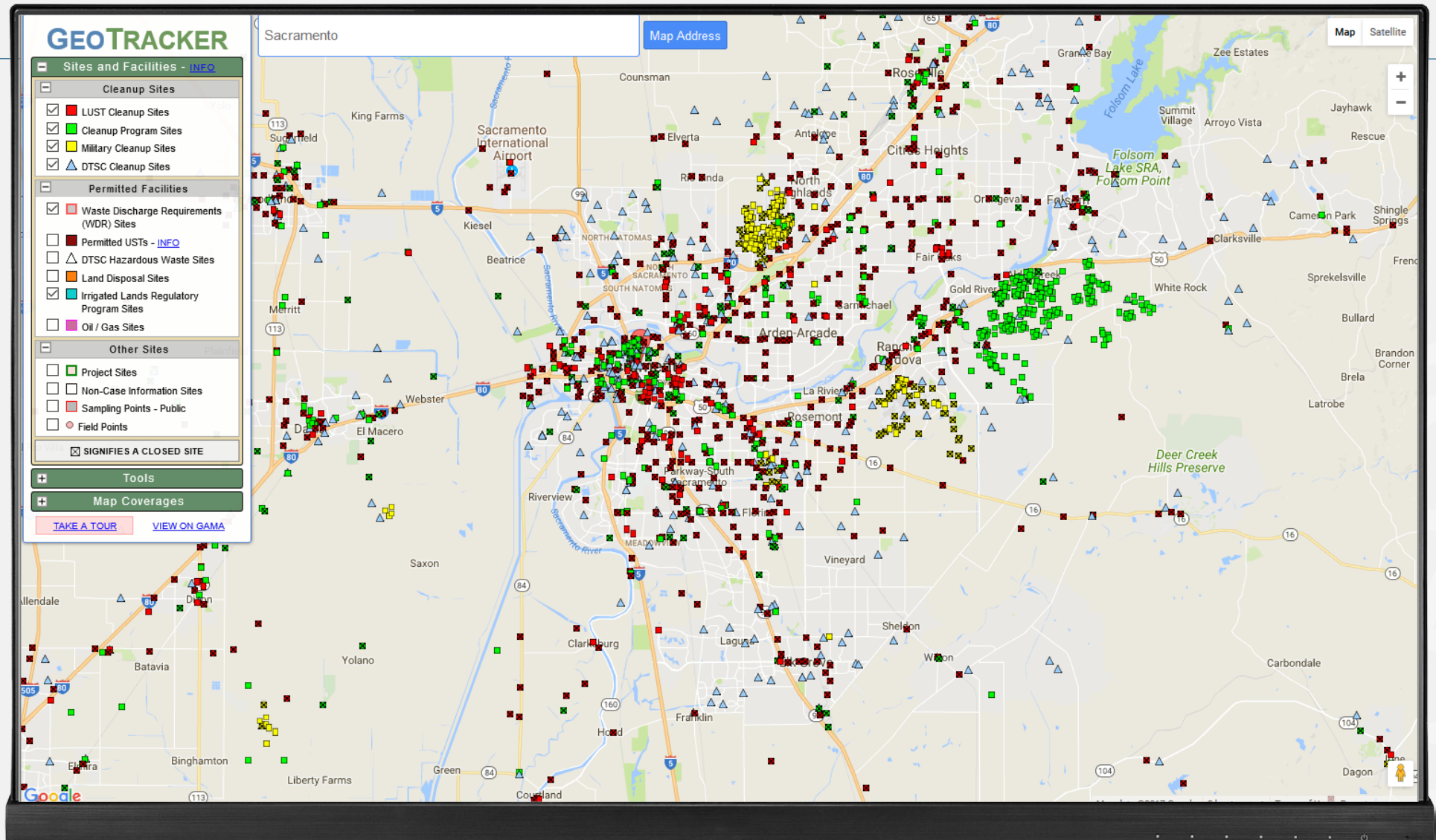
- Geotracker: <https://geotracker.waterboards.ca.gov/>
- USGS Water Watch, California:  
<https://groundwaterwatch.usgs.gov/statemap.asp?sc=06&sa=CA>
- Groundwater Information Center: <https://gis.water.ca.gov/app/gicima/>
- Groundwater Basin Boundary Assessment Tool:  
<https://gis.water.ca.gov/app/bbat/>
- CASGEM: [http://www.water.ca.gov/groundwater/casgem/online\\_system.cfm](http://www.water.ca.gov/groundwater/casgem/online_system.cfm)
- OSWCR: boring logs/well completion report: <http://www.water.ca.gov/oswcr/>

## ■ GSA/Local Agency only resources

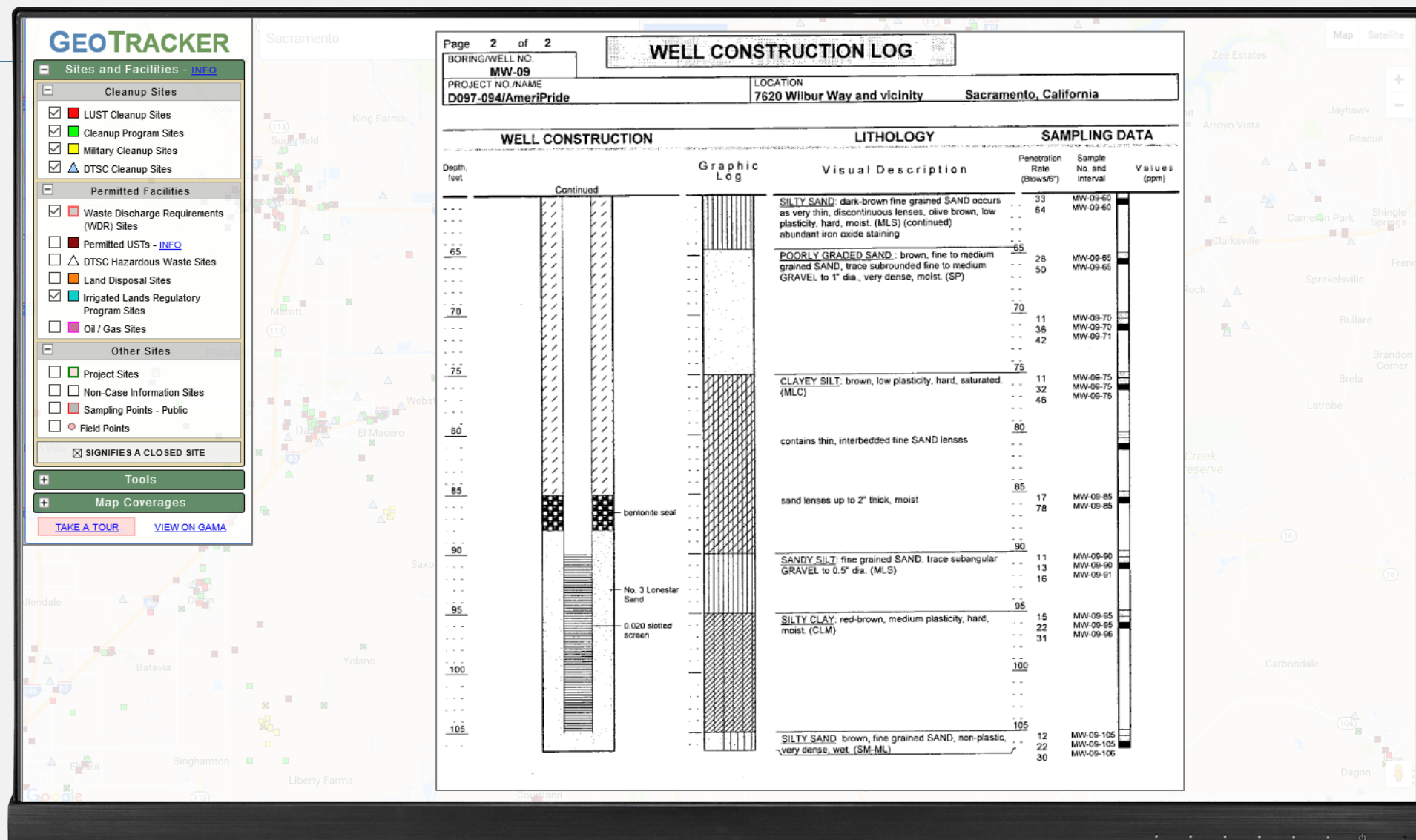
- Basin Boundary Modification Request System:  
<http://sgma.water.ca.gov/basinmod/>
- Local data (water levels, boring logs, localized models, aquifer characterization data etc)



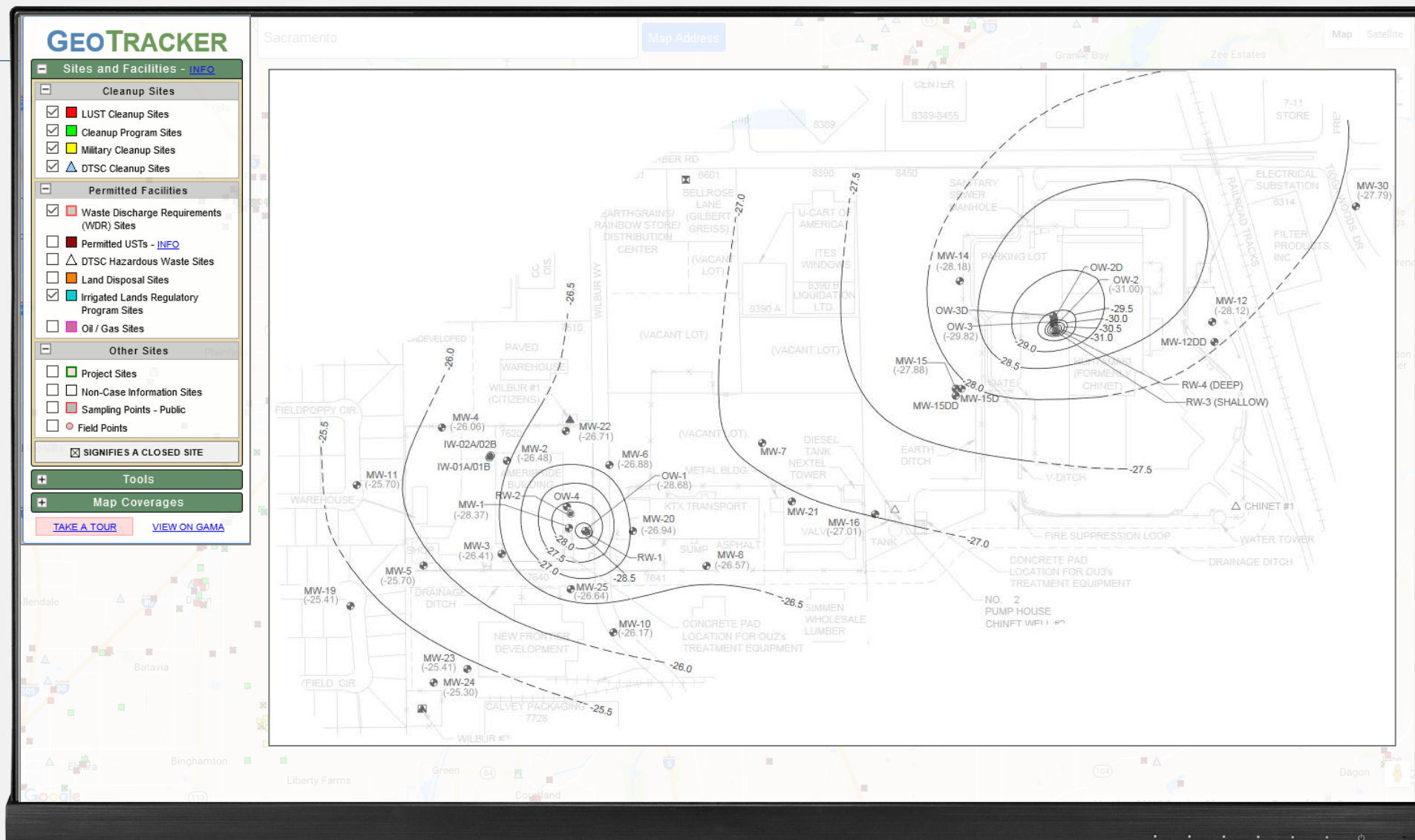
# GeoTracker







# GeoTracker

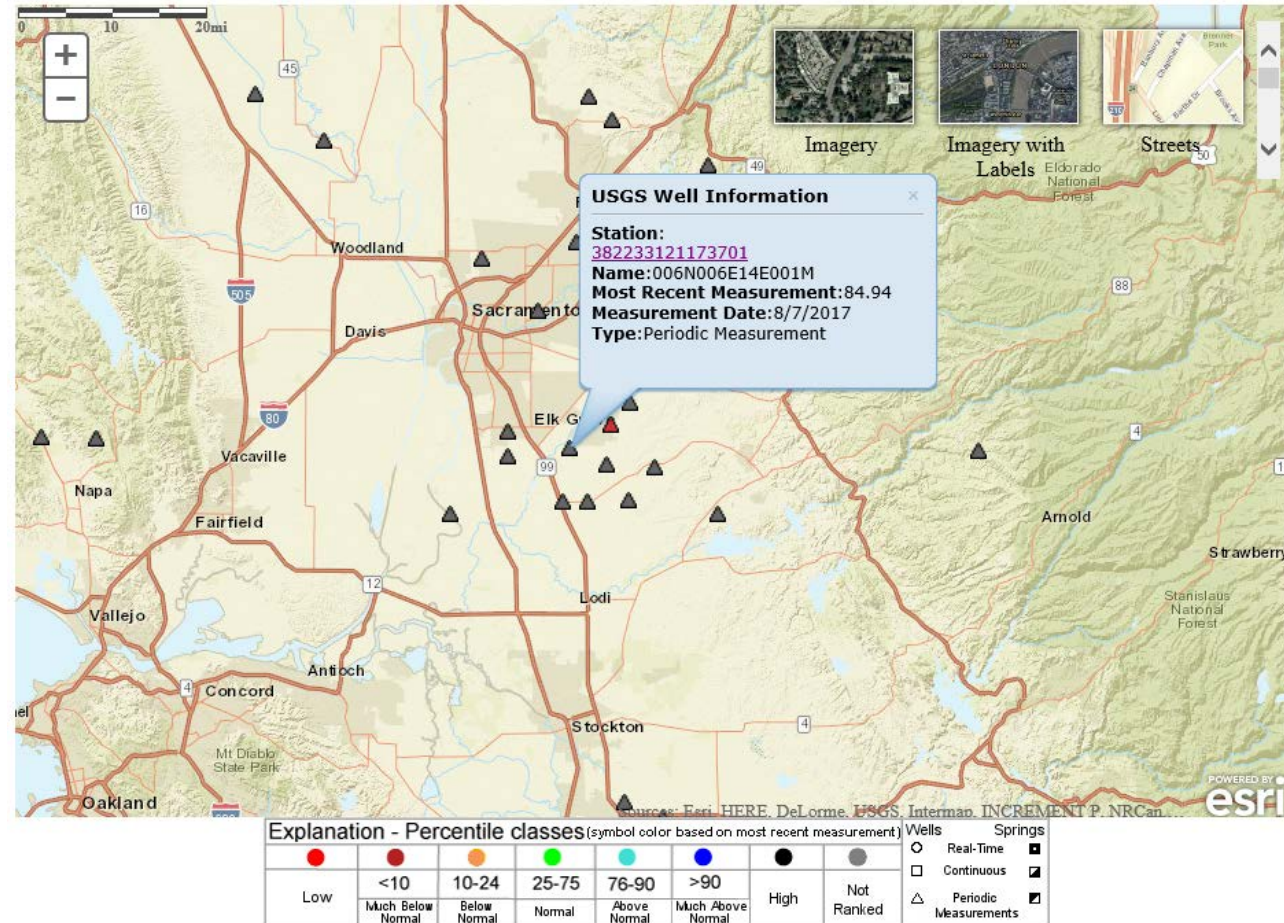




# USGS – Groundwater Watch

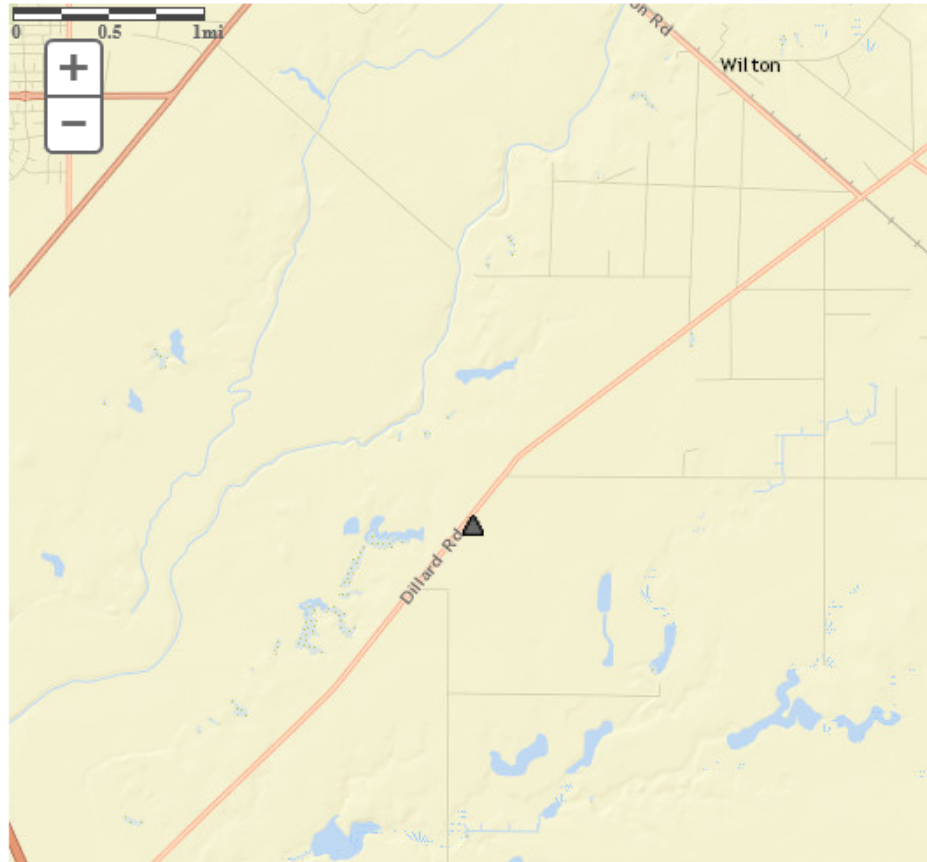
## California Active Water Level Network

Click site symbol to open information pop-up. Click Station ID in pop-up for county information and site selection.  
Map loading slowly? Try a different browser. Web browser performance varies significantly.



# USGS – Groundwater Watch

Site Number: 382233121173701 - 006N006E14E001M



## DESCRIPTION:

Latitude 38°22'33.5", Longitude 121°17'42.1" NAD83  
 Sacramento County, California, Hydrologic Unit 18040013  
 Well depth: 525 feet  
 Hole depth: 525 feet  
 Land surface altitude: 62feet above NAVD88.  
 Well completed in "Central Valley aquifer system" (S100CNRLVL) national aquifer.  
 Well completed in "Merten Formation (Pliocene-Miocene)" (121MRTN) local aquifer

## AVAILABLE DATA:

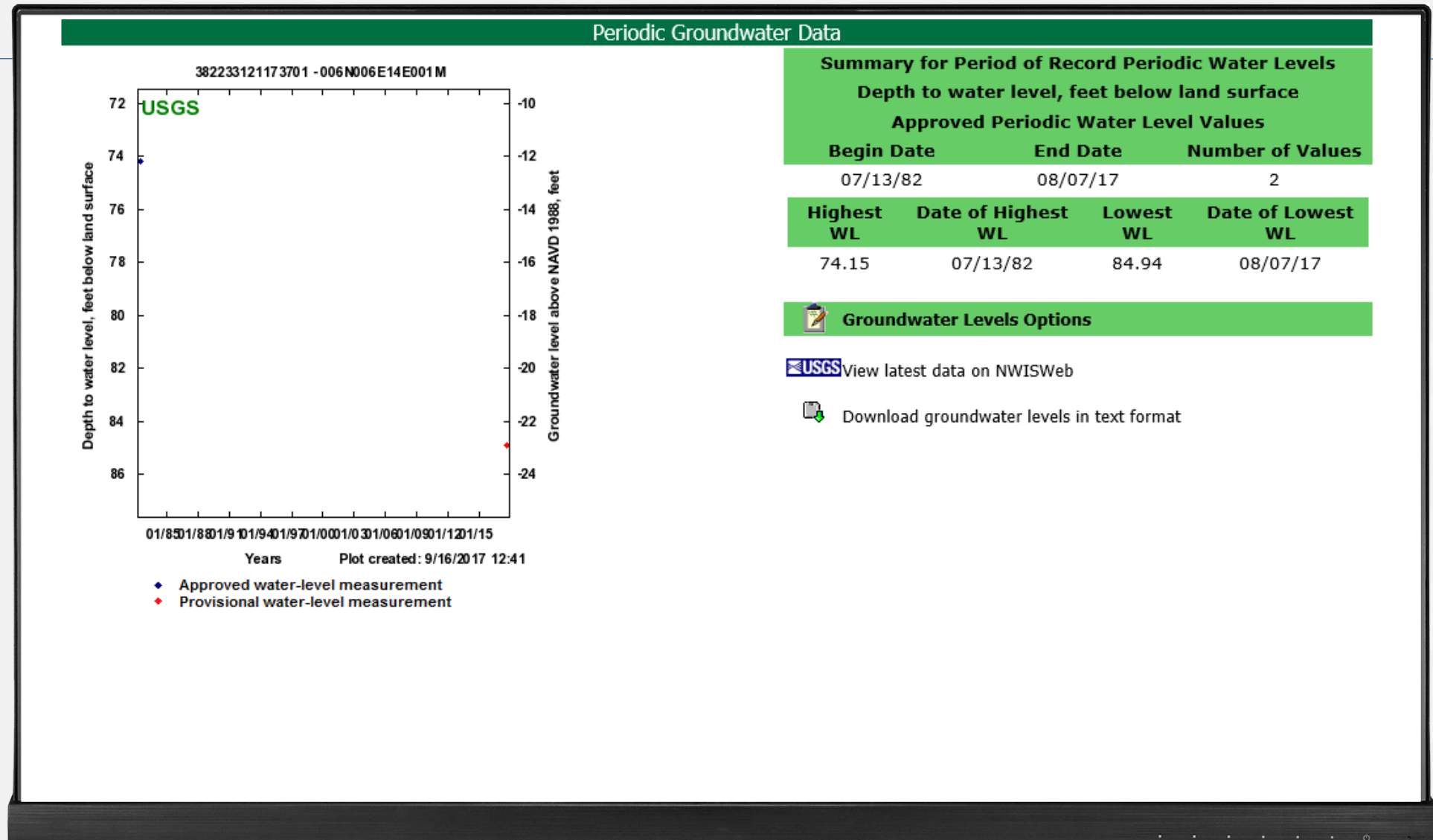
Data Type	Begin Date	End Date	Count
Field groundwater-level measurements	1982-07-13	2017-08-07	2
Field/Lab water-quality samples			

## OPERATION:

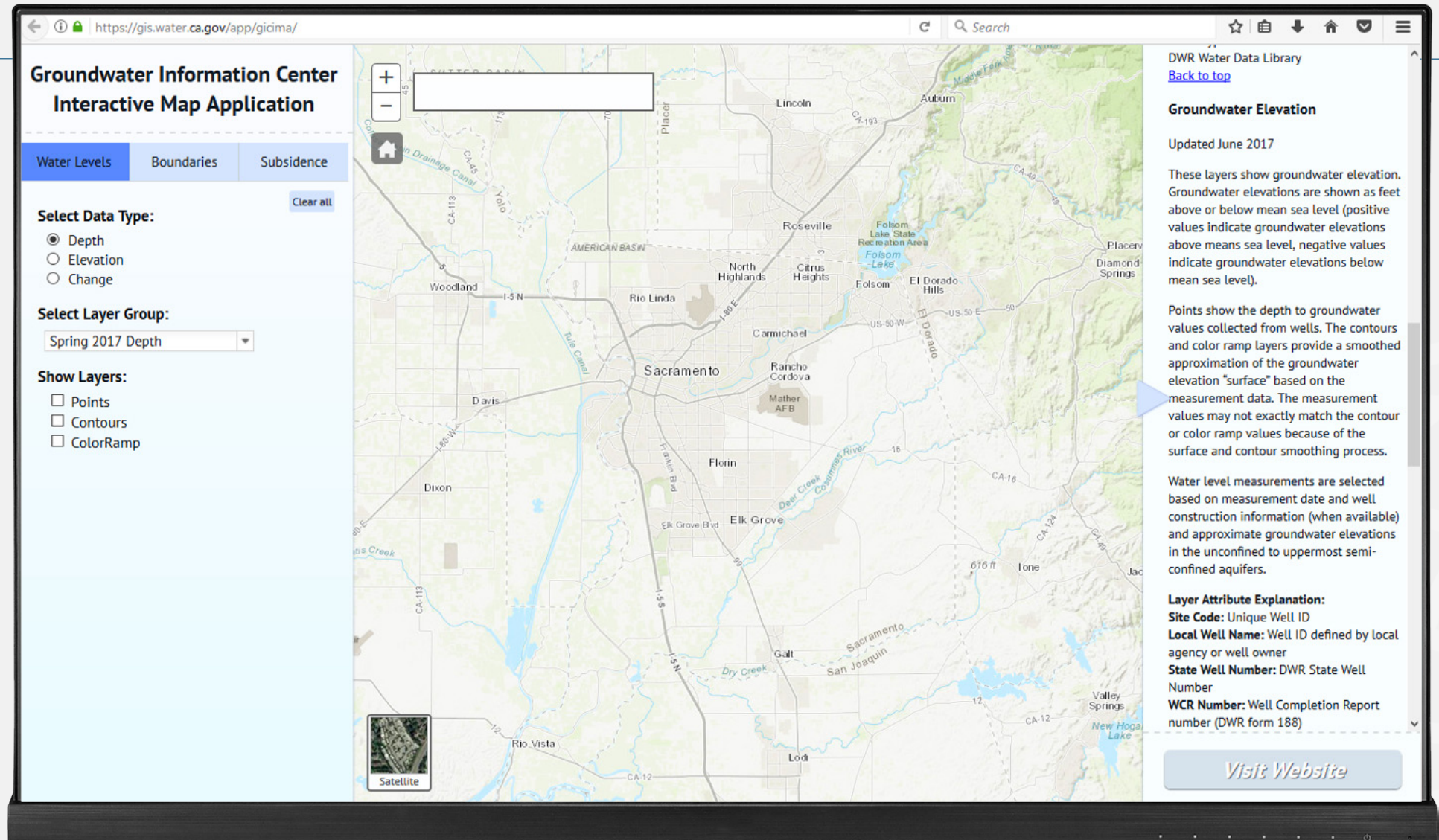
Record for this site is maintained by the USGS California Water Science Center  
 Email questions about this site to [California Water Science Center Water-Data Inquiries](#)



# USGS – Groundwater Watch

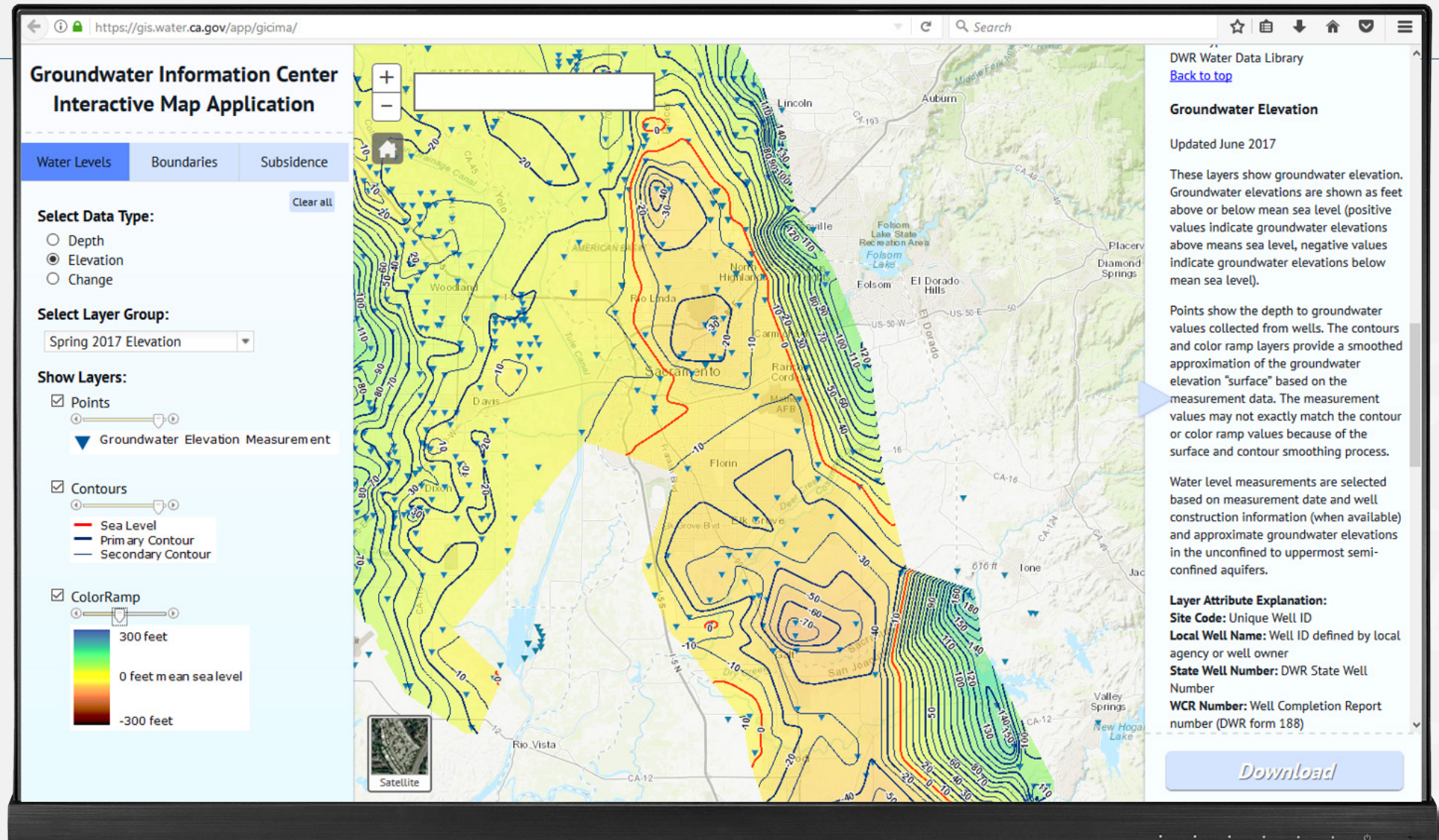


# DWR - Groundwater Information Center






# DWR - Groundwater Information Center





# Groundwater Basin Boundary Assessment Tool




## Groundwater Basin Boundary Assessment Tool


Boundary References
Geology References

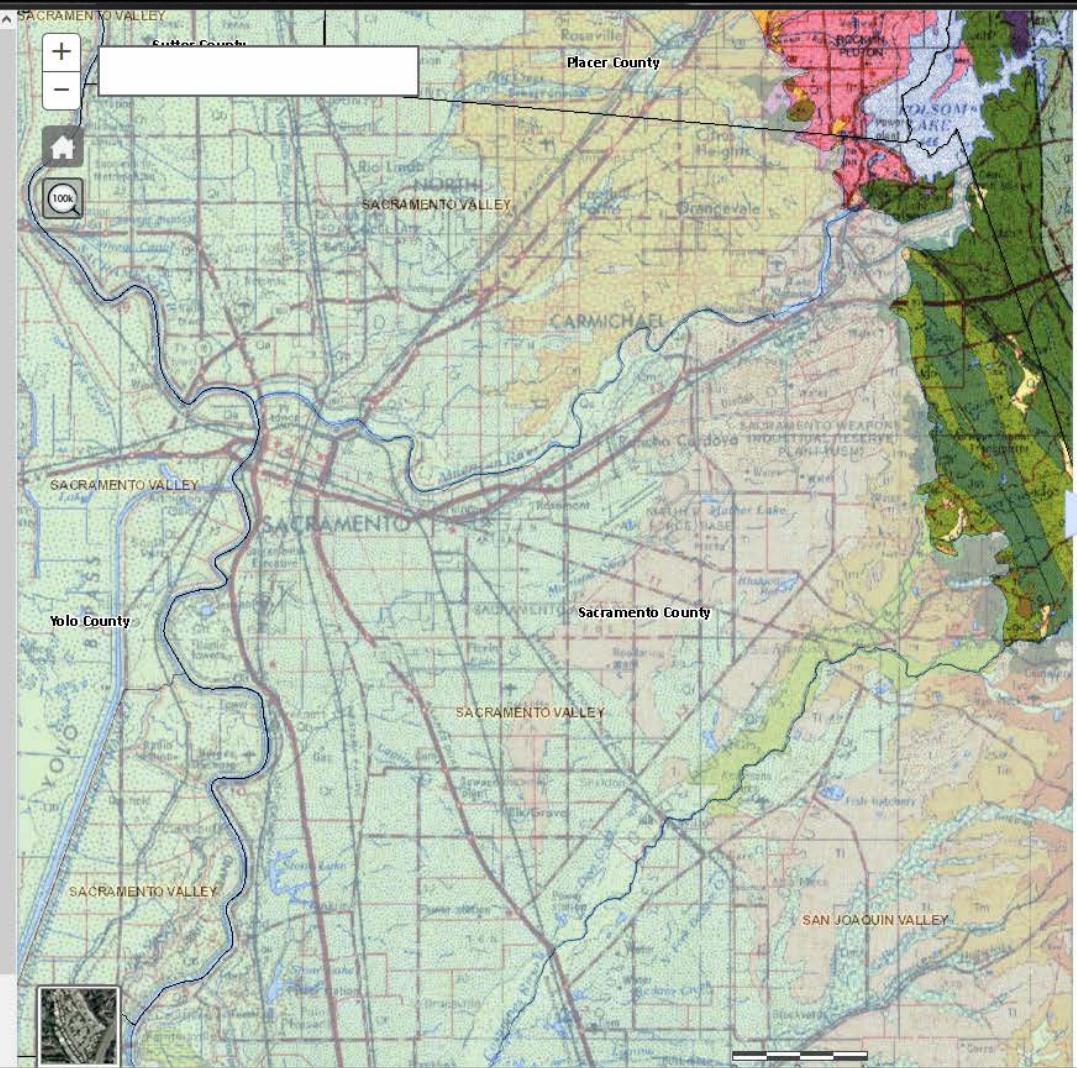
[Clear all](#)

### Boundary References

- ☒ County Boundaries
 

 County Boundary
- ☐ Region Office Service Areas
- ☐ Hydrologic Regions
- ☐ Prop 1 Funding Areas
- ☐ Regional Water Quality Control Board Boundaries
- ☐ Tribal Lands
- ☐ Military Installations, Ranges, and Training Areas
- ☐ CDFW Lands
- ☐ Regional Flood Planning Boundaries
- ☐ Reclamation Districts
- ☐ Adjudicated Regions
- ☐ Critically Overdrafted Basins
- ☐ CASGEM Designated Monitoring Entities
- ☐ CASGEM Groundwater Basin Prioritization
- ☐ Groundwater Management Plans
- ☒ B118-2016
 

 Groundwater Basins
- ☐ B118-2003
- ☐ IRWM Regions
- ☐ US Forest Service Land



### Boundary References

Click on features in the map or see below for more information:

**DATA DISCLAIMER**

All information provided by the Department of Water Resources on its Web pages and Internet sites, is made available to provide immediate access for the convenience of interested persons. While the Department believes the information to be reliable, human or mechanical error remains a possibility. Therefore, the Department does not guarantee the accuracy, completeness, timeliness, or correct sequencing of the information. Neither the Department of Water Resources nor any of the sources of the information shall be responsible for any errors or omissions, or for the use or results obtained from the use of this information.

Below are brief descriptions to the layers contained in the map:

**County Boundaries** This layer depicts the boundaries of California's Counties as developed by CAL FIRE.

**Region Office Service Areas** This layer depicts The coverage Area of DWR's Region Offices. [More Info...](#)

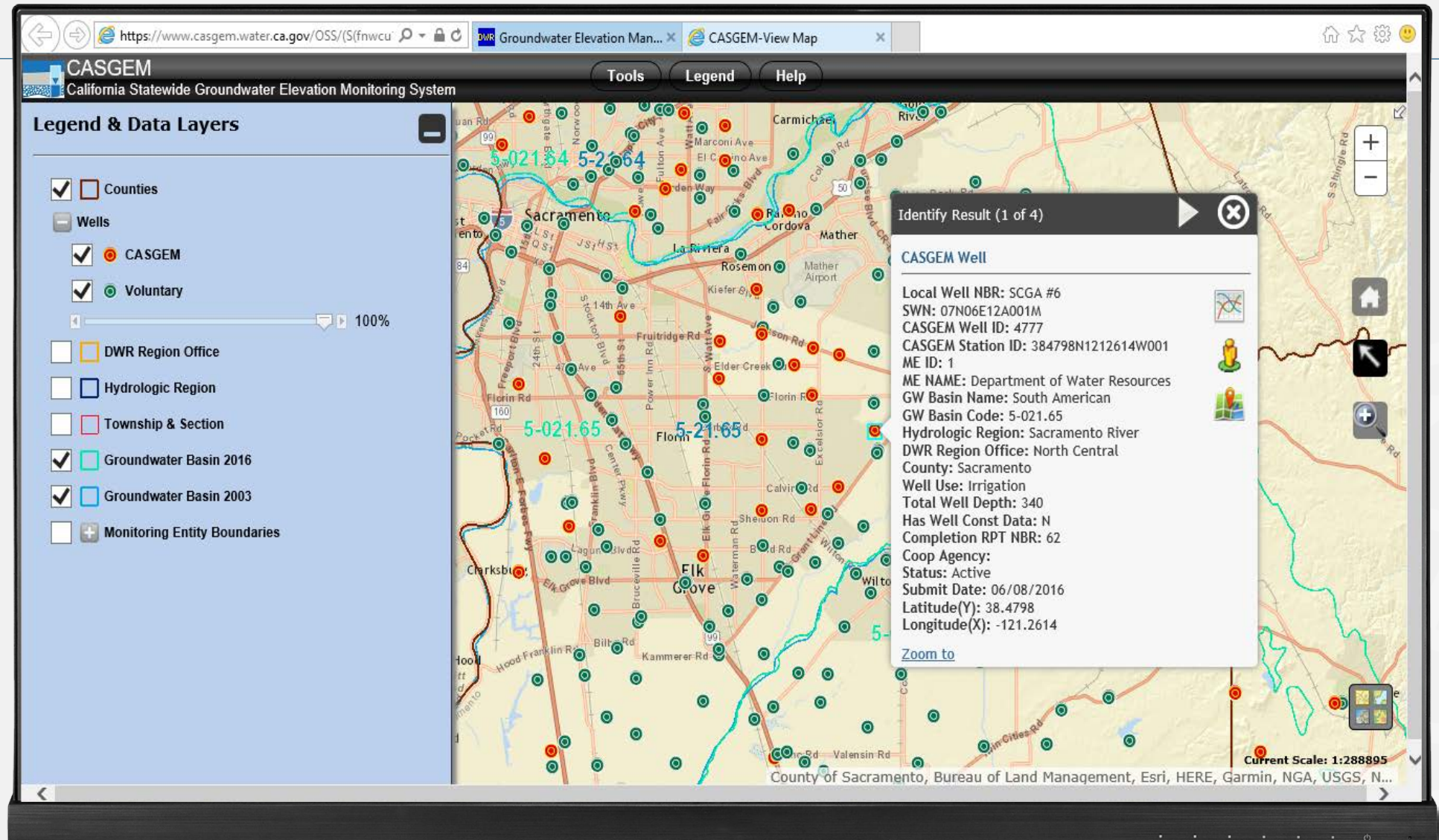
**Hydrologic Regions** This layer depicts the 10 areas representing the major California watersheds and is used by a variety of DWR programs including the CA Water Plan. [More Info...](#)

**Prop 1 Funding Areas** This layer depicts the 12 funding areas called out in Proposition 1. [More Info...](#)

**Regional Water Quality Control Board Boundaries** This layer depicts the



# CASGEM



# CASGEM





# CASGEM Monitoring Well Details

STATE OF CALIFORNIA – THE NATURAL RESOURCES AGENCY  
DEPARTMENT OF WATER RESOURCES

EDMUND G. BROWN JR, Governor

<b>NORTHERN REGION</b> 2440 Main Street Red Bluff, CA 96080 (530)-529-7300 (530) 529-7322 (Fax) April.Scholzen@water.ca.gov	<b>NORTH CENTRAL REGION</b> 3500 Industrial Blvd. West Sacramento, CA 95691 (916) 376-9612 (916) 376-9676 (Fax) NCRO_WCR@water.ca.gov	<b>SOUTH CENTRAL REGION</b> 3374 E. Shields Ave Ste A7 Fresno, CA 93726 (559) 230-3300 (559) 230-3301 (Fax) Chris.Guevara@water.ca.gov	<b>SOUTHERN REGION</b> 770 Fairmont Avenue Glendale, CA 91203 (818) 549-2307 (818) 543-4604 (Fax) waterdata@water.ca.gov
--	--	---	---

## WELL COMPLETION REPORT REQUEST FORM

California Water Code Section 13752 allows for the release of copies of well completion reports to governmental agencies and to the public. The department may charge a fee for the provision of a report to cover the cost of researching and preparing the well completion reports for distribution. Please contact the appropriate DWR regional office for more details.

Type of Request: ☐ Government Agency ☐ Public Request (Owner of well: ☐ Yes ☐ No)  
(Note: Consultant requests are Public Requests.)

Project Name: \_\_\_\_\_ County: \_\_\_\_\_

Well/ Project Location: \_\_\_\_\_

**For A Single Well:**  
Owner at time of drilling: \_\_\_\_\_ Driller: \_\_\_\_\_  
APN: \_\_\_\_\_ Year Drilled: \_\_\_\_\_ Depth of Well: \_\_\_\_\_ Casing Diameter: \_\_\_\_\_

**For a Radius Search:**  
Search Radius: \_\_\_\_\_ ☐ ft ☐ mi List of Township, Range, and Sections: \_\_\_\_\_  
\_\_\_\_\_

Additional Information related to your search request (Maps, Coordinates, etc.):  
\_\_\_\_\_  
\_\_\_\_\_  
\_\_\_\_\_

**Requestor's Contact Information:**  
Name (Please print): \_\_\_\_\_ Company: \_\_\_\_\_  
Address: \_\_\_\_\_ Phone: \_\_\_\_\_  
City, State, and Zip Code: \_\_\_\_\_ Fax: \_\_\_\_\_  
Email: \_\_\_\_\_ Date: \_\_\_\_\_

**FOR DWR USE ONLY**  
TRS: \_\_\_\_\_ Cost of Search: \_\_\_\_\_  
PQ Check: \_\_\_\_\_ Initials: \_\_\_\_\_ Date: \_\_\_\_\_ Time: \_\_\_\_\_ PMT Received: \_\_\_\_\_

September 18, 2015

## Public: Well Details

### View Well Data

#### Identification

Local Well Designation SCGA #6  
Is Local Designation the same as State Well #? No  
State Well Number 07N06E12A001M  
Master Site Code 384798N1212614W001  
CASGEM Well Id 4777  
Data submittals for this well are under CASGEM

#### Reference and Ground Surface

RP Elevation 117.90 ft.  
Description None Provided  
GS Elevation 117.40 ft.  
Method Unknown  
Accuracy Unknown  
Distance from RP 0.50

#### Well Use

Well Use Irrigation  
Well Status Active

#### Well Construction

Completion Type Single Well  
Total Depth 340 ft.  
Do you have well construction data? No  
Well completion report available? Yes  
Well Completion Report # 62

#### Additional Information

Written description of location of well

#### Geography

Latitude 38.4798 North  
Longitude -121.2614 West  
[View on Map](#)  
Method Unknown  
Accuracy Unknown  
Physical Basin 5-021.65 South American  
County Sacramento

#### Well Associations

##### Organization

Sacramento Central Groundwater Authority  
Sacramento County

Please contact your local regional office to dissociate your organization from a CASGEM well.

Primary Well Org Sacramento Central Groundwater Authority  
Notification Basin/Portion 5-021.65 - South American / South American Subbasin within SCGA

Any additional comments

# Remediators: How can SGMA affect you?

SGMA establishes new powers of authority for GSAs

- Potential for new regulatory fees  
**Translation:** potential to assess new pumping fees
- Potential for new permitting systems that relate to a water accounting framework that is developed by the GSA  
**Translation:** potential delays/additional permitting fees

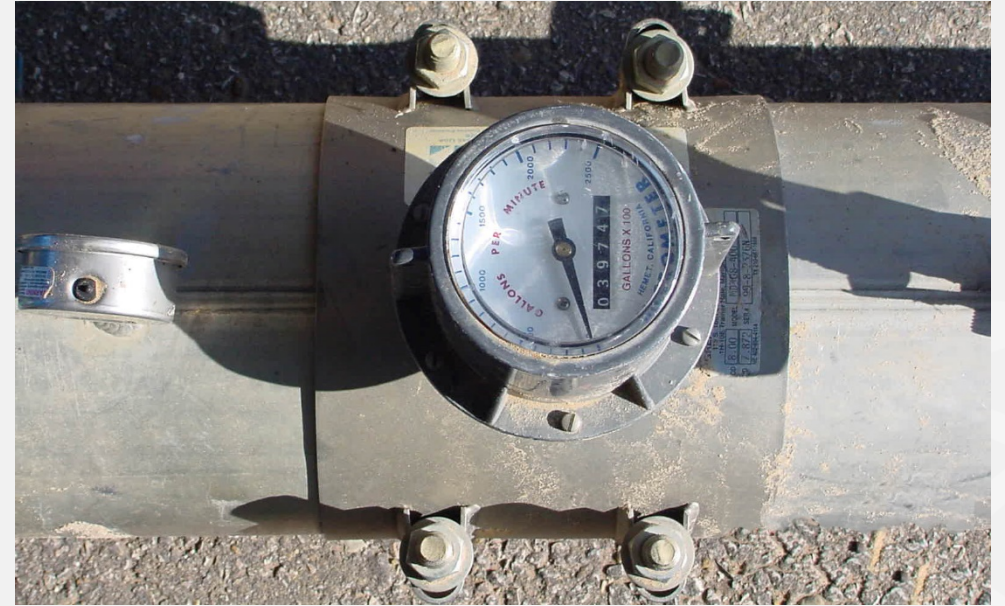
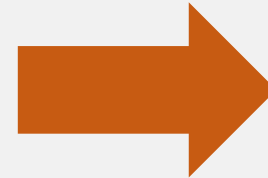


Photo credit: Panhandle Groundwater Conservation District

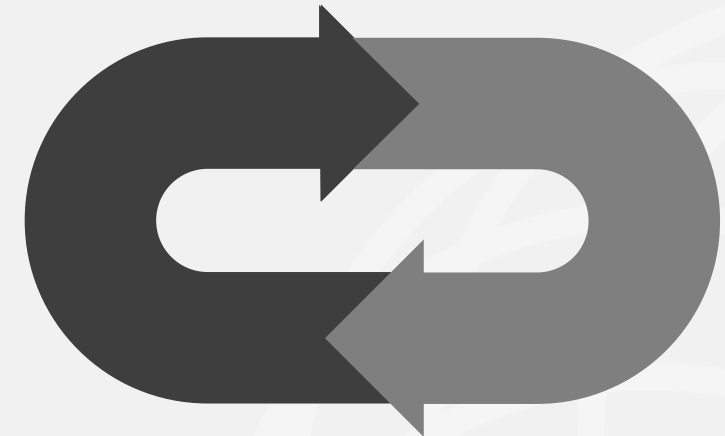


# Remediators: Use SGMA to benefit/expedite cleanup

Interplay between regulatory authorities



Can result in new approaches



Chemical injection could avoid pumping

Pump and Treat systems - recapture

# Coordination with GSAs provide a direct link to Sustainability Programs

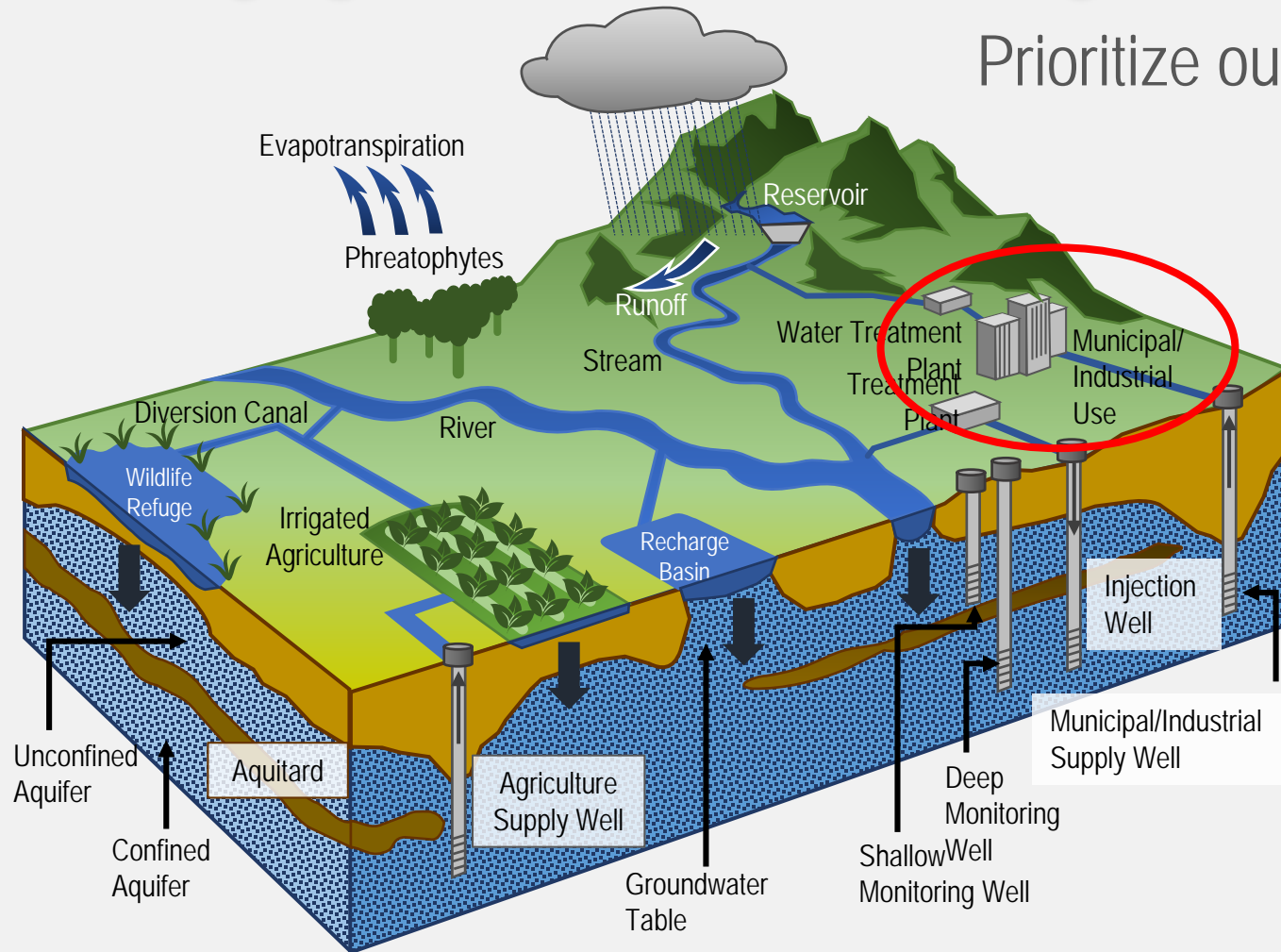




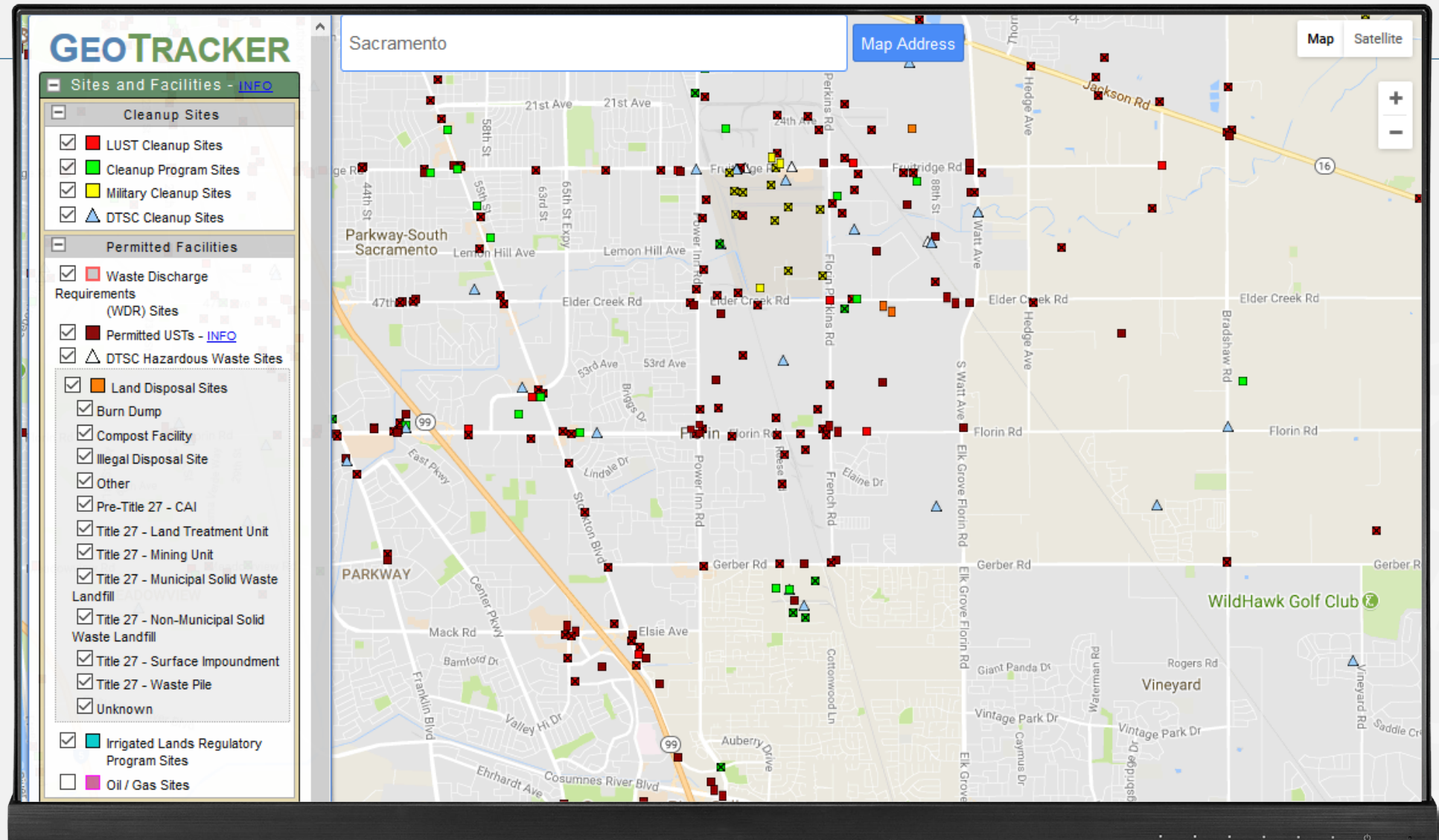
# Engagement: Define Targets

Prioritize outreach to environmental sites

- Active sites
- Groundwater involved
- Sites with high pumping rates
- Large sites

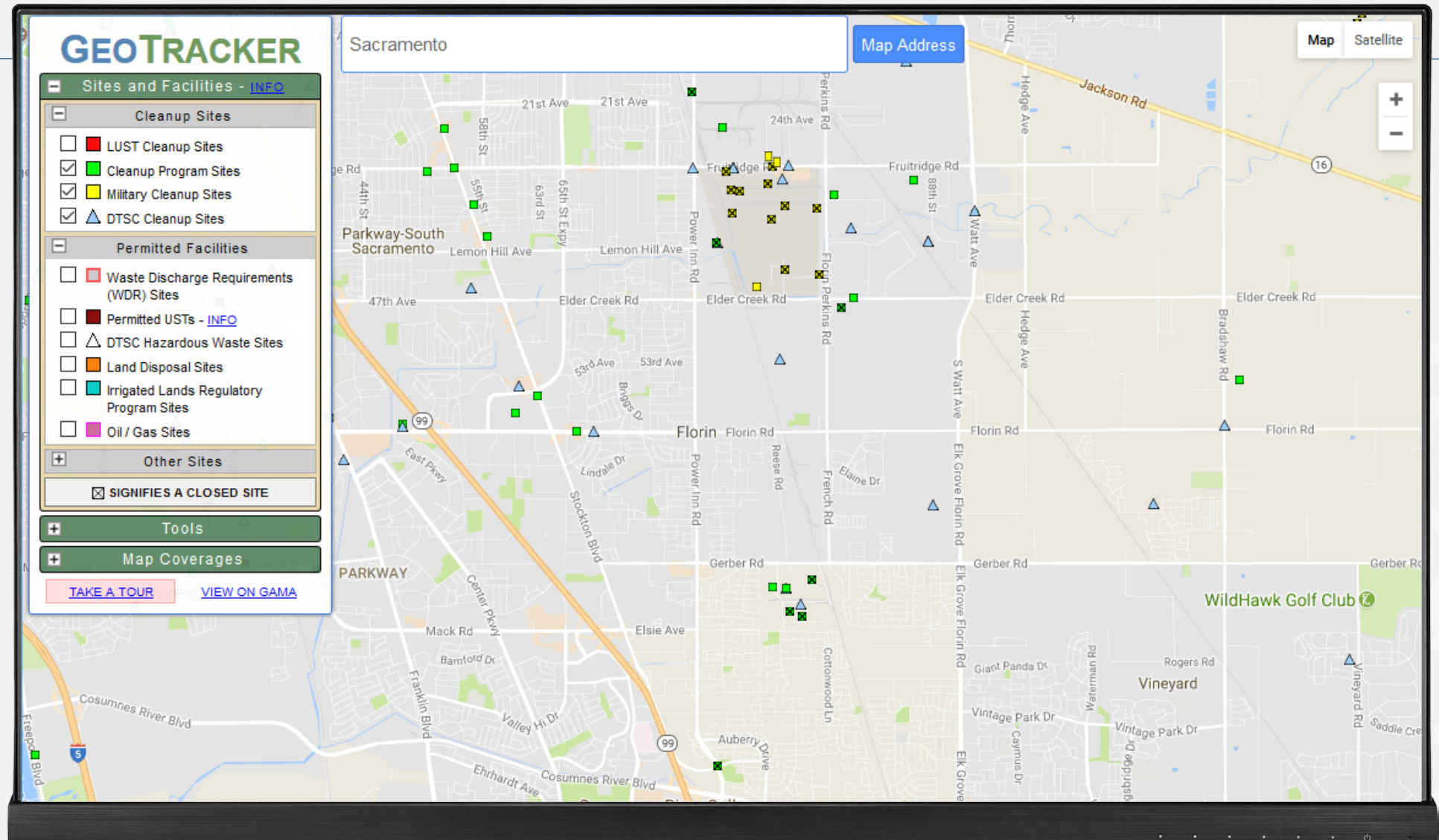


# Prioritization of Sites to Streamline Outreach

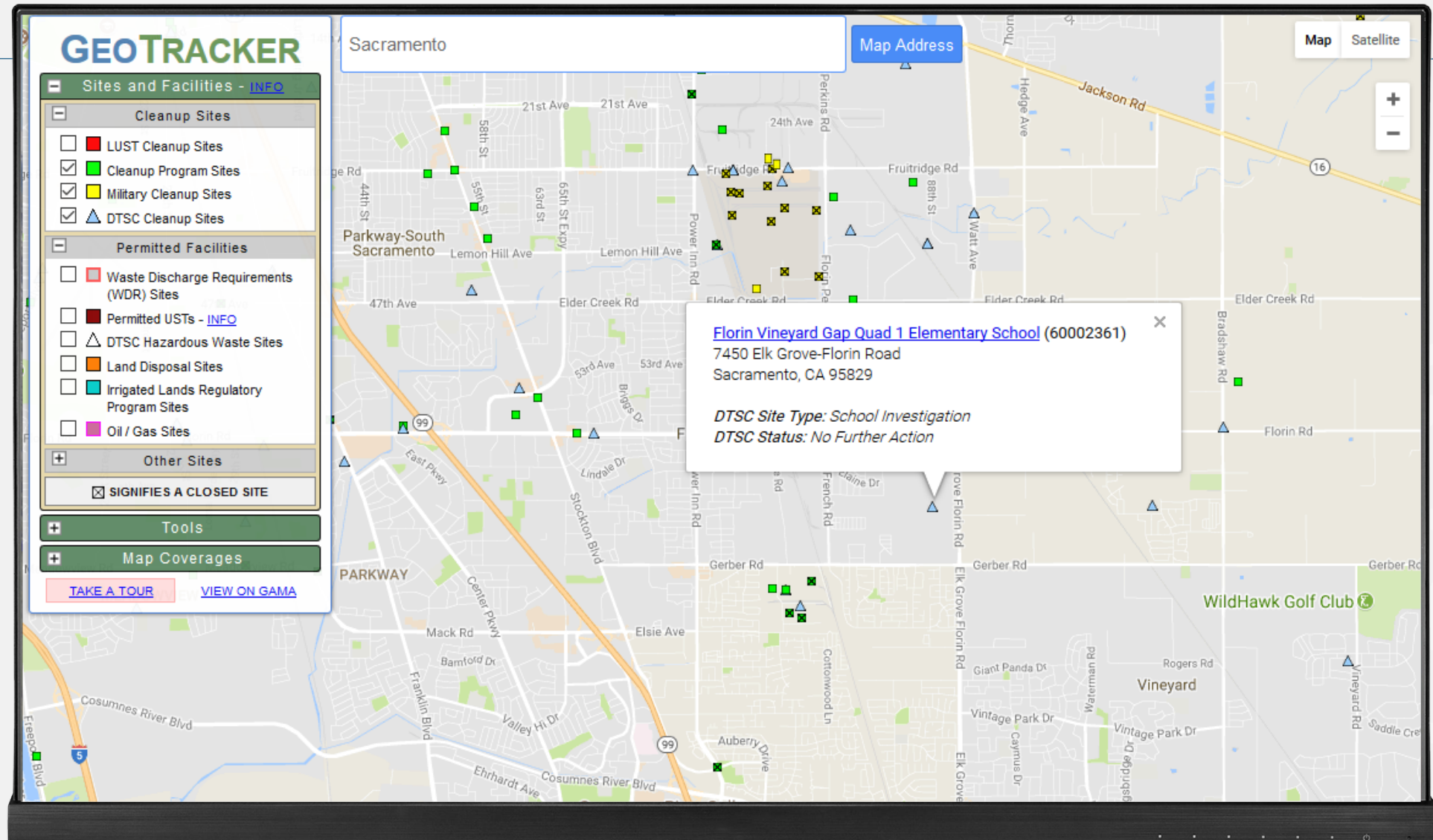




# Prioritization of Sites to Streamline Outreach



# Prioritization of Sites to Streamline Outreach





# How GSAs can engage Remediators?



**How to reach out**

DTSC,  
CalEPA/RWQCB/CDPH/USEPA -  
learn about sites



**Who to reach out to**

Environmental manager  
for site

Important to do these presentations through other forums!  
“Hey did you know about SGMA? You should be paying attention.”