

Governance



Bill Blomquist

Dept. of Political Science, Indiana University-Indianapolis

Anita Milman

Dept. Environmental Conservation, University of Massachusetts-Amherst

Tara Moran,

Water in the West Program, Stanford University



Agenda

- Governance (and some lessons from pre-SGMA groundwater management)
- Patterns in the formation of GSAs
- GSA flash presentations
- Tasks and challenges that lie ahead



Sustainable Groundwater Management Act

“Local agencies will now have the power to assess the conditions of their local groundwater basins and take the necessary steps to bring those basins in a state of chronic long-term overdraft into balance.”

-Gov. Edmund G. Brown Jr.
From the letter accompanying
the signing of AB 1739, SB
1168 and SB 1319

SGMA is Groundbreaking

For California:

- statewide groundwater management requirements

and Beyond:

- creation of local authorities in ~100 basins
- focus on long-term, multi-objective sustainability
- room for varied approaches



Sustainable Groundwater Management Act

“Local agencies will now have the power to assess the conditions of their local groundwater basins and take the necessary steps to bring those basins in a state of chronic long-term overdraft into balance.”

-Gov. Edmund G. Brown Jr.
From the letter accompanying
the signing of AB 1739, SB
1168 and SB 1319

SGMA's approach makes governance vitally important

Creating new
institutions for
governance is not
an easy task

Lessons from pre-SGMA groundwater governance

Basins in California have been managed by

- Special act districts – Orange County Water District, Santa Clara Valley Water District, etc.
- Adjudications and court-appointed watermasters – Raymond Basin, Main San Gabriel, Chino, etc.
- Voluntary plans – Redding, Madera, Piru-Fillmore, etc.



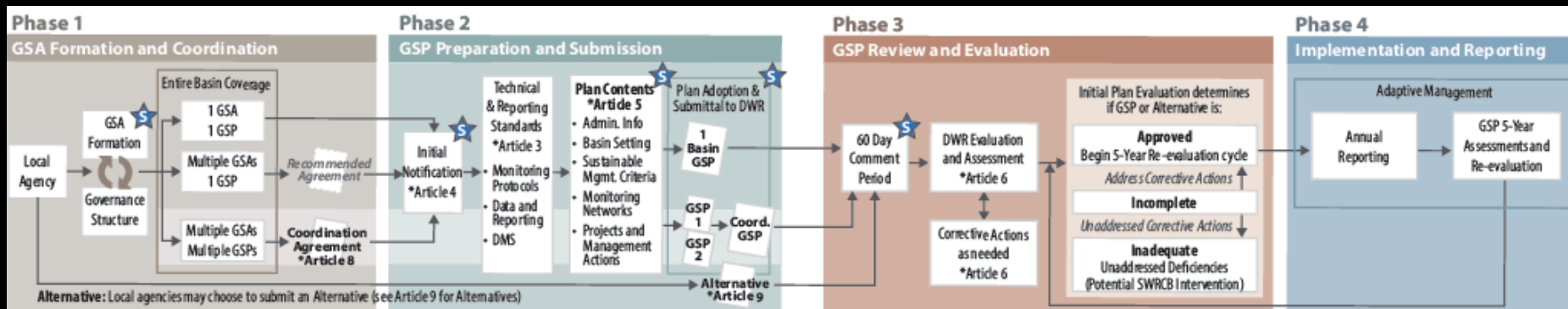
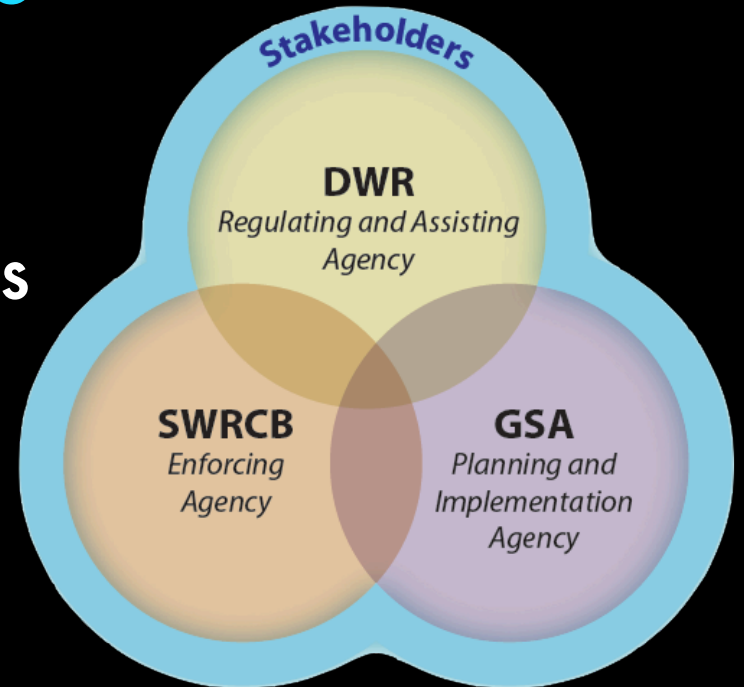
Similarities (with SGMA)

- Basin-oriented governance and management
- Addressing groundwater problems that had led to unsustainable conditions
- State support – DWR basin investigations, state funding for projects, state enabling legislation



SGMA Differences

- Deadlines
- Requirements for plan contents and expected outcomes
- State review and possible preemption

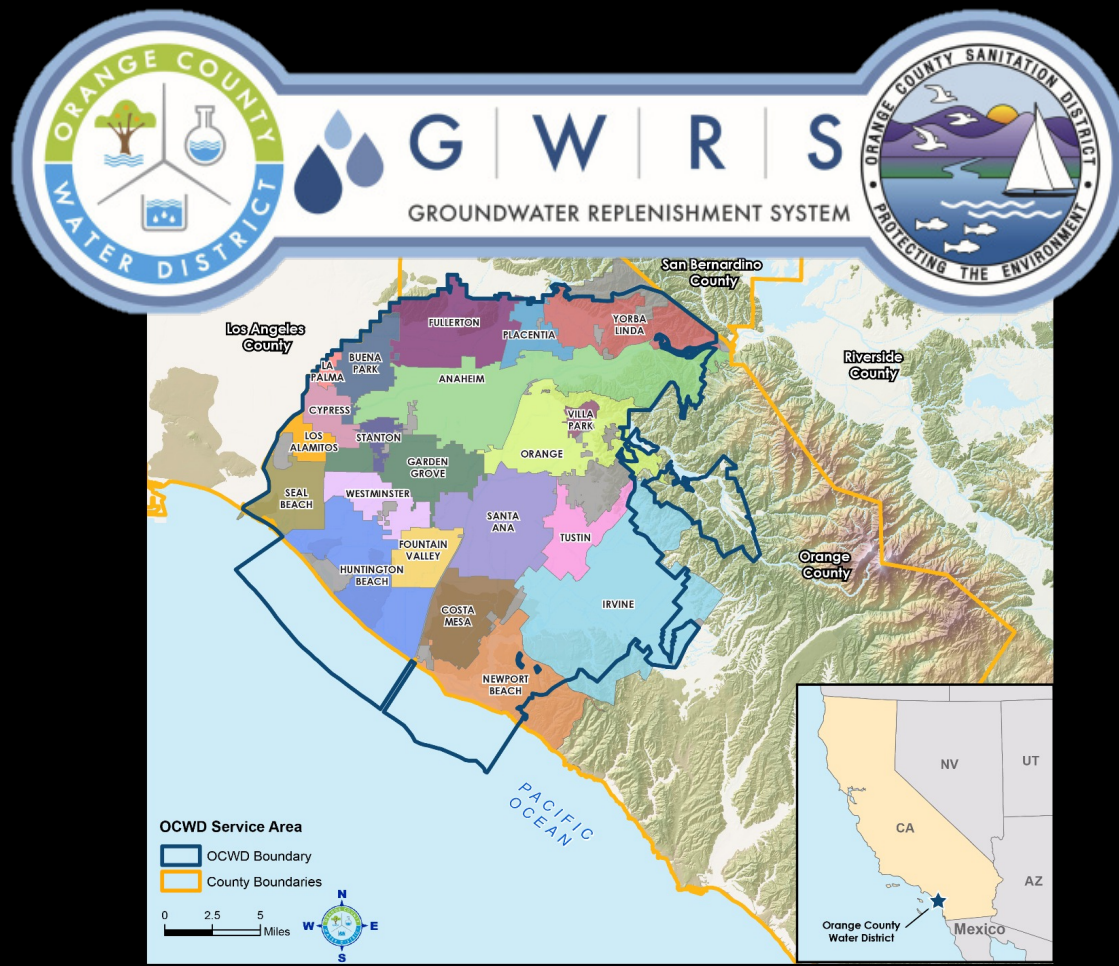


Governance Lessons From Pre-SGMA Experiences

Governance entails coordination

Even if you are the only GSA
in your basin, you are not
alone

Your GSA and your basin
exists within an (often
crowded) institutional
environment.

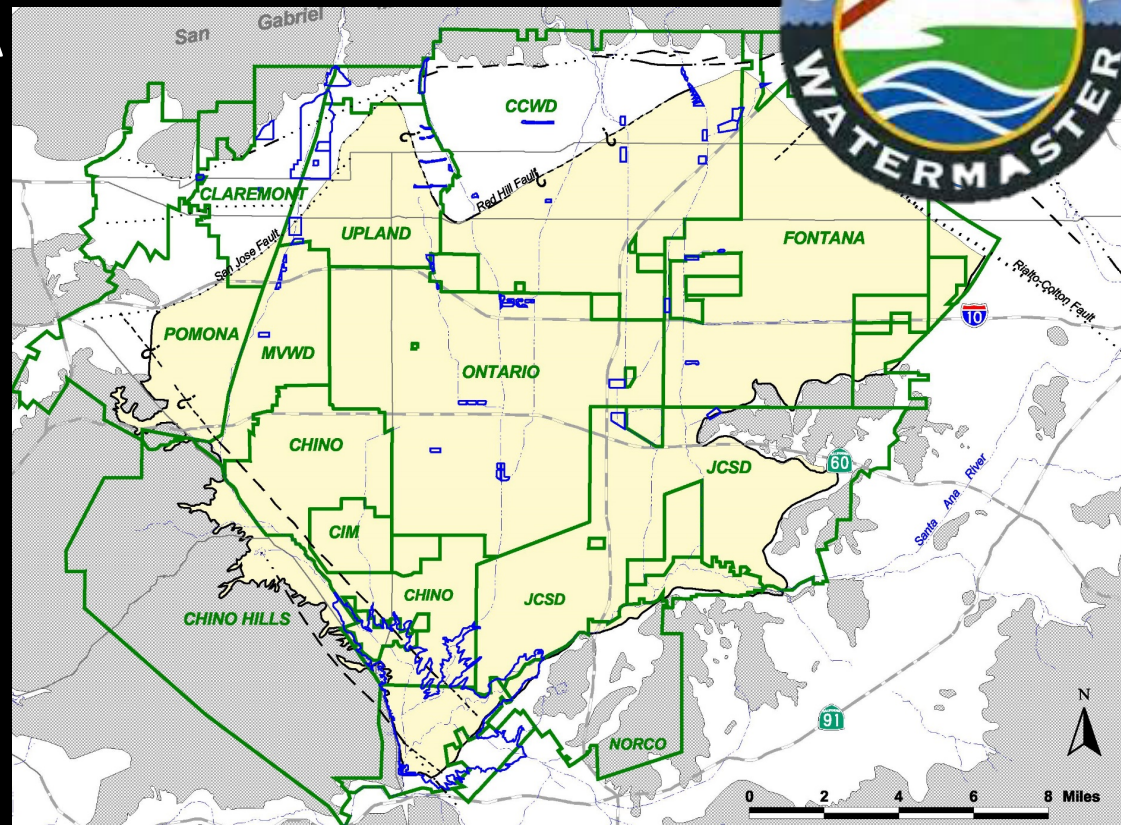


Governance Lessons From Pre-SGMA Experiences

Governance entails coordination

Even if you are the only GSA in your basin, you are not alone

Your GSA and your basin exists within an (often crowded) institutional environment.





Governance Lessons From Pre-SGMA Experiences

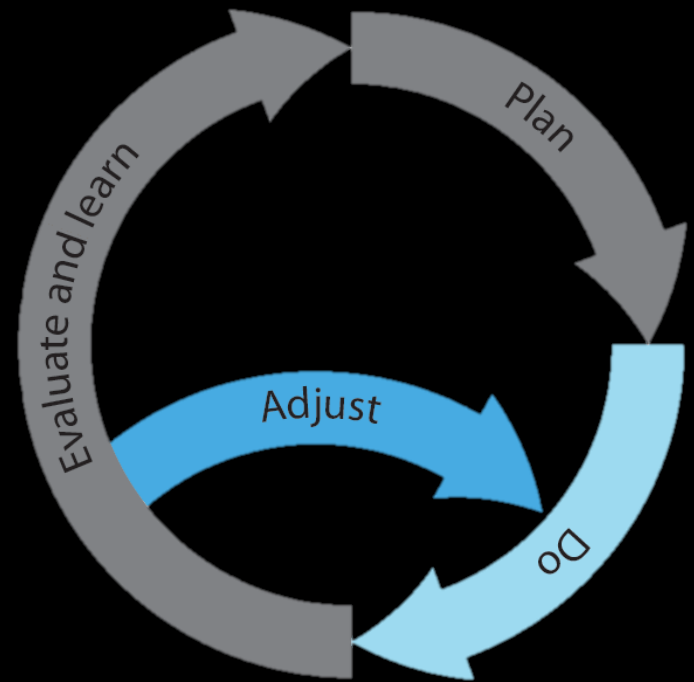
Governance entails coordination

- This means reaching out proactively – ignoring others won't make them go away.
- It means finding partners, and not trying to do everything yourself.
- It means getting help, and building on prior efforts (your own and others').

Governance Lessons From Pre-SGMA Experiences

Governance entails adaptation

- Things will change and will keep changing.
- Governance can fail over time.
- Governance has to be sustainable too.



Governance Lessons From Pre-SGMA Experiences

Governance entails adaptation



This means
looking down the
road, trying to
see around
corners



Governance Lessons From Pre-SGMA Experiences

Governance entails adaptation

- No need to copy any pre-SGMA governance model
- The point is to anticipate change, be prepared for it, and adapt and modify your governance and management processes accordingly

Therefore, consider...

- How the physical circumstance of your basin will change
- How the economic and demographic characteristics of your basin will change
- How your GSA's representation and decision making processes will need to change
- How your GSA's financial and human resources will need to change
- How to ensure that your GSA is a learning organization



These aren't easy things to do

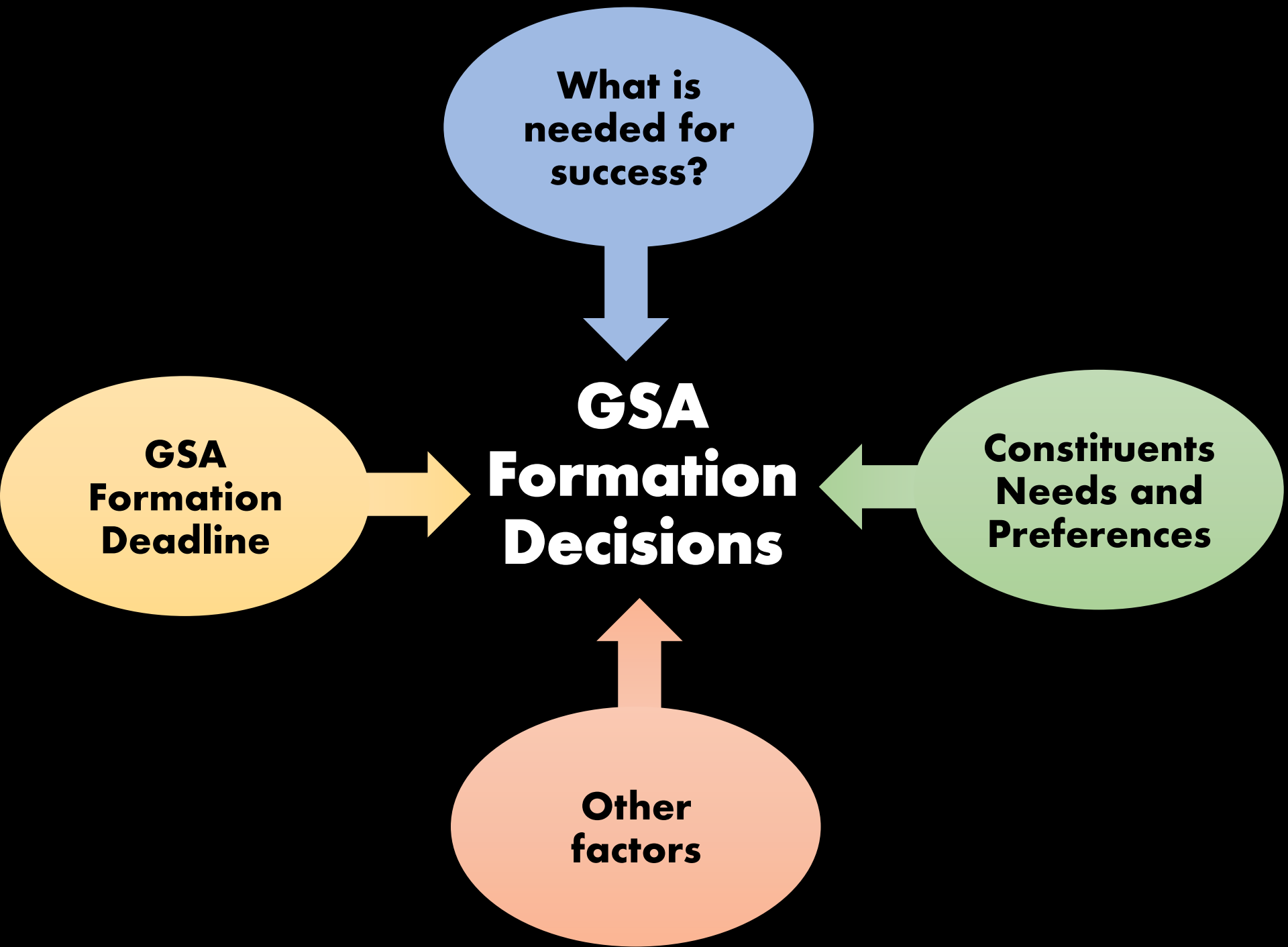
- You may take some comfort in knowing that nobody gets it all right at first
- Build that awareness into your governance processes
- The immediate will demand your attention anyway
- The longer term needs your attention too
- Having a longer-term vision will help put the immediate needs and actions in a clearer context



Governance Decisions To Date



- What agencies and entities would form GSAs
- How decisions will be made and responsibilities allocated across GSA members
- How stakeholders can participate
- Initial consideration of how GSAs might coordinate with one another



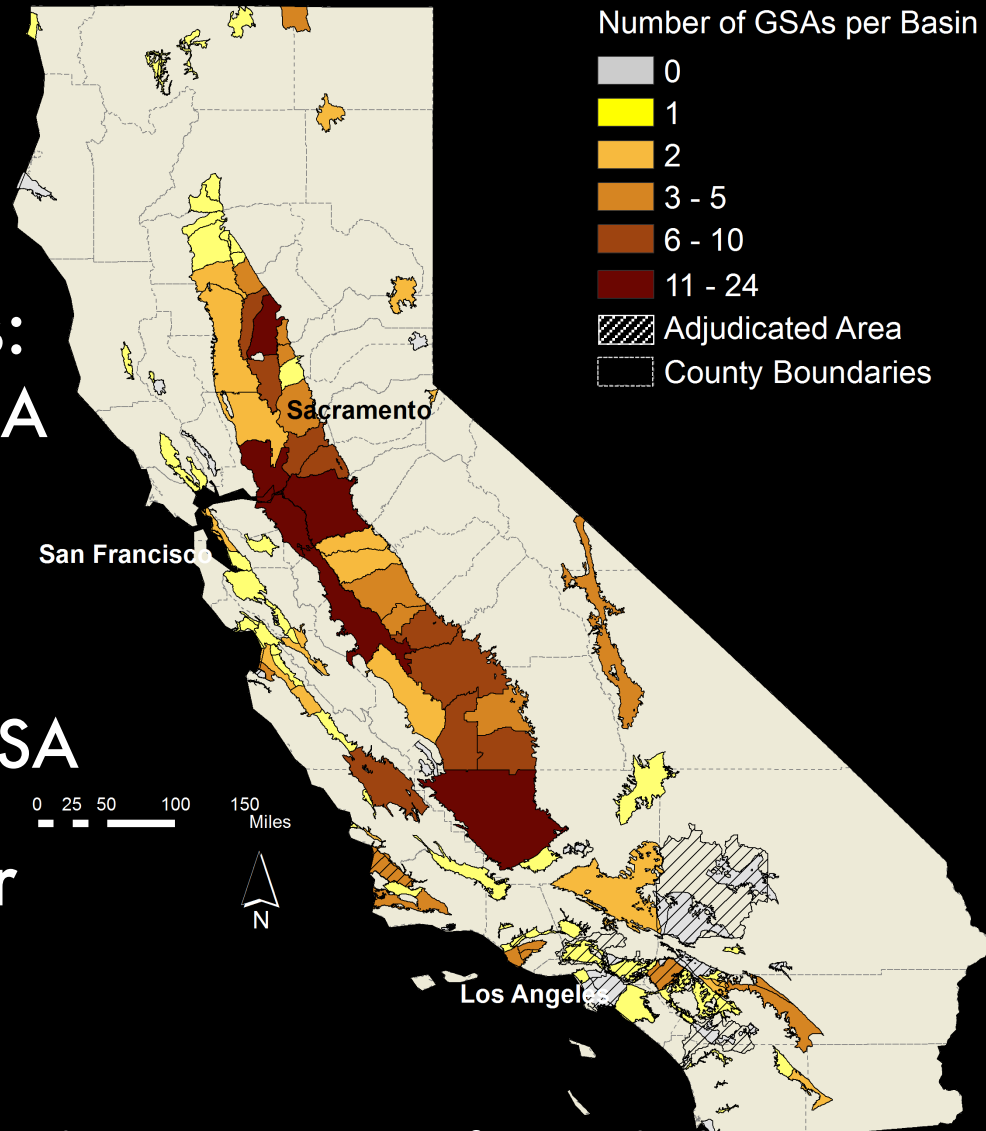
GSAs Per Basin

Total: 264 GSAs*

Across 135 priority basins:

- 49 fully covered by 1 GSA
- 19 have 2 GSAs
- 35 have 3+ GSAs
- 23 have no GSAs
- 9 partly covered by 1 GSA

GSAs formed in 28 low or very low basins



* As of July 2017. Count based on filings. Where the same institutions form multiple GSAs, each GSA is counted separately.

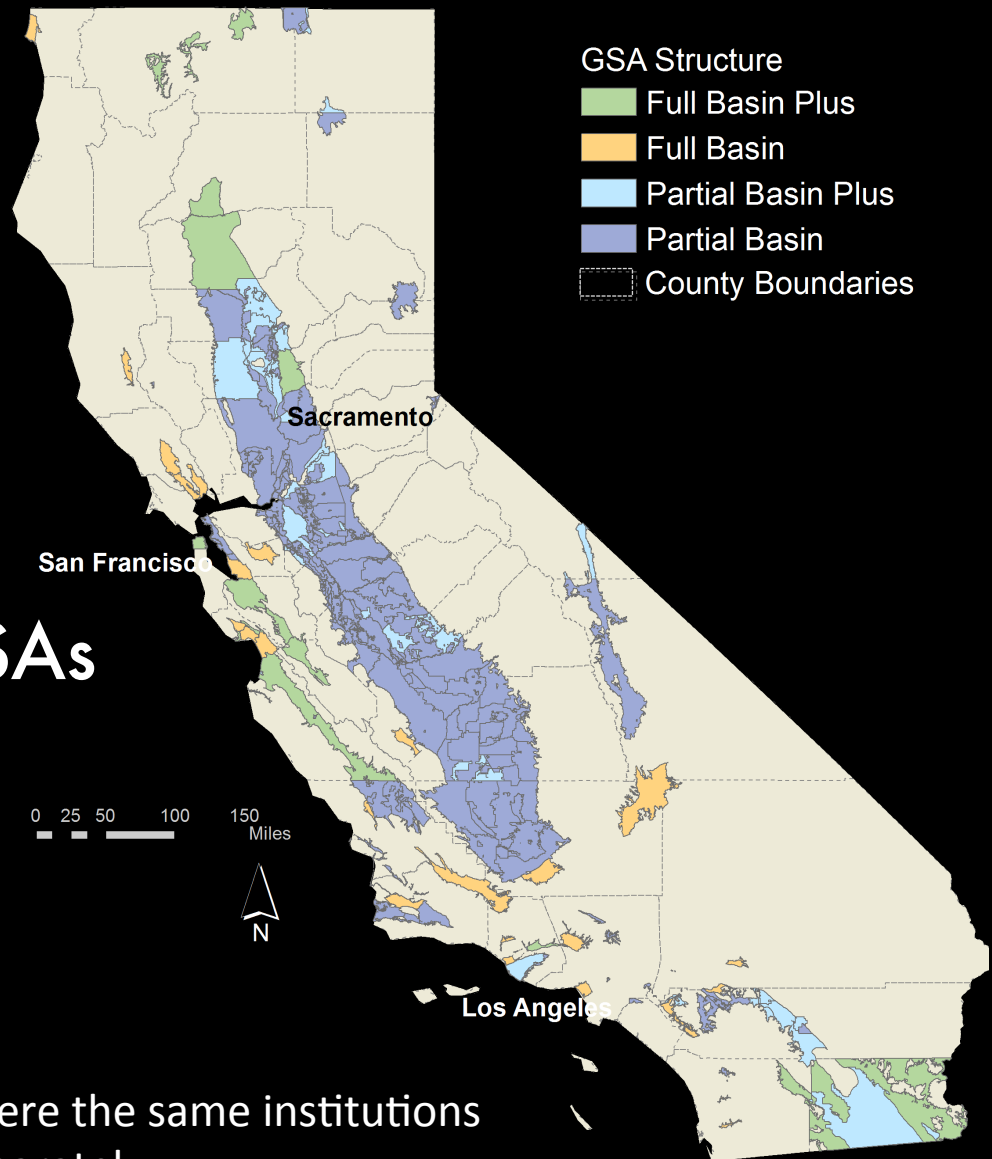
Geographic Scope of GSAs

29 Full Basin GSAs

12 Full Basin Plus GSAs

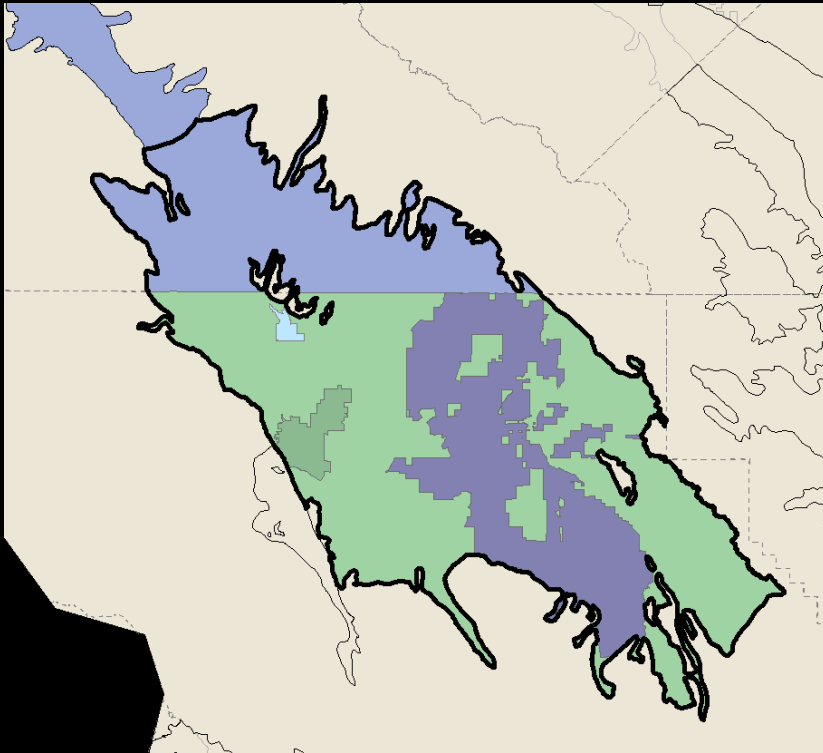
197 Partial Basin GSAs

26 Partial Basin Plus GSAs

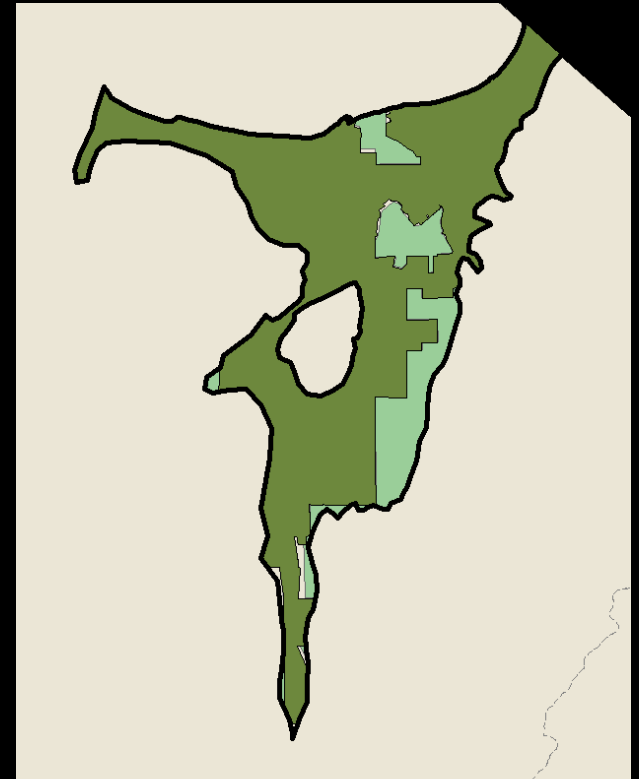


* As of July 2017. Count based on filings. Where the same institutions form multiple GSAs, each GSA is counted separately.

Many GSAs Cover Non-Contiguous Areas



Salinas Valley
(4 GSAs)



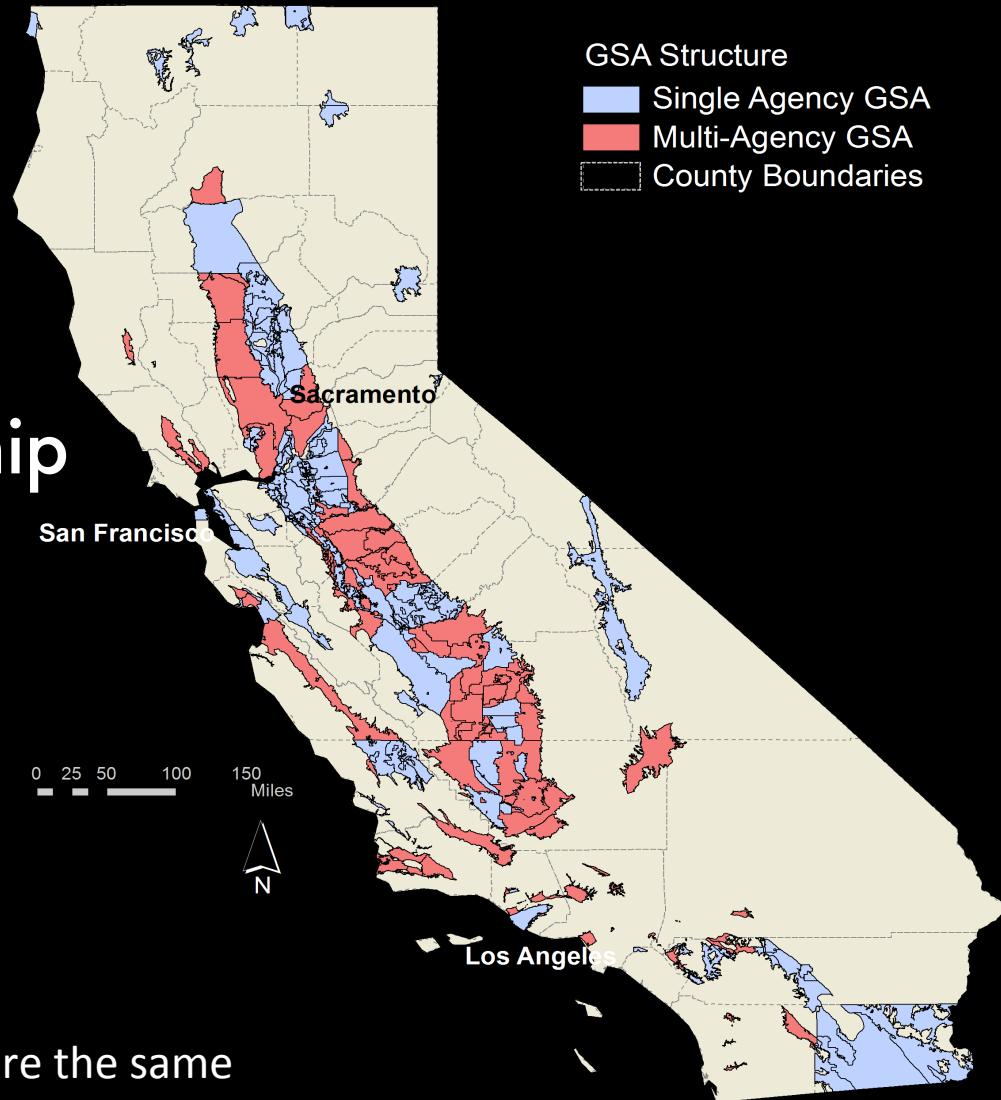
Tahoe Valley
(2 GSAs)

Majority are Single-Agency GSAs

190 GSAs formed by a single-agency

74 GSAs are a partnership across agencies

- 2 to 27 voting partners
- 40 JPAs
- 34 MOUs



* As of July 2017. Count based on filings. Where the same institutions form multiple GSAs, each GSA is counted separately.

Decision-making Mechanisms of the Multi-Agency GSAs

Board Representation:

- 28 include non-public entities
- 17 include non-voting representatives

Voting Structure:

- 46 allow one vote per member agency
- 28 use a weighted voting scheme
- Also include other voting structures

* As of July 2017. Count based on filings. Where the same institutions form multiple GSAs, each GSA is counted separately.



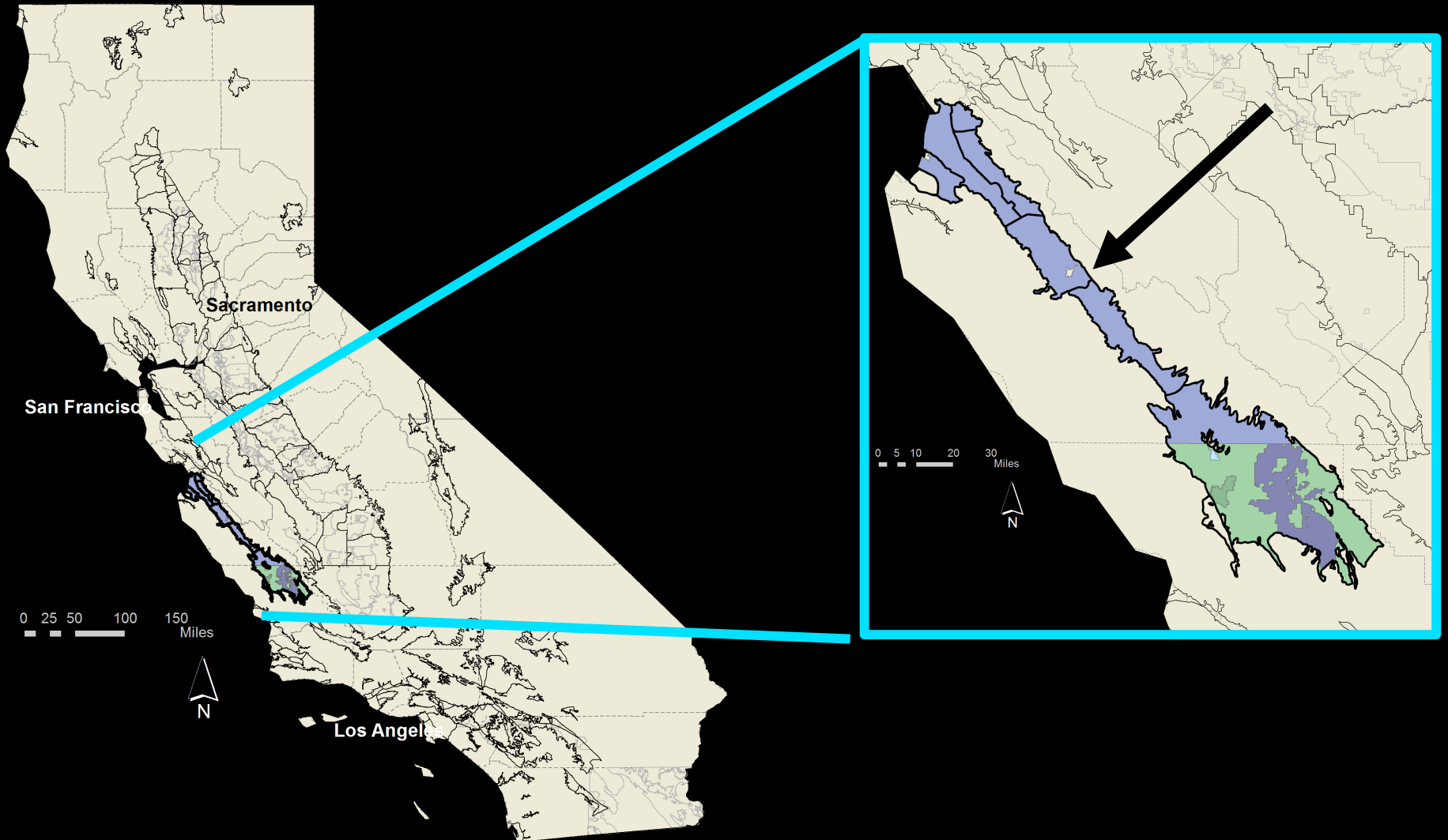
Cost Sharing Mechanisms of the Multi-Agency GSAs

- Not specified (≈ 40 GSAs)
- Only initial contributions specified
- Equal contributions
- Contributions vary by member
 - Fixed amount
 - Fixed plus variable amount



Gary Petersen

Salinas Valley Basin GSA



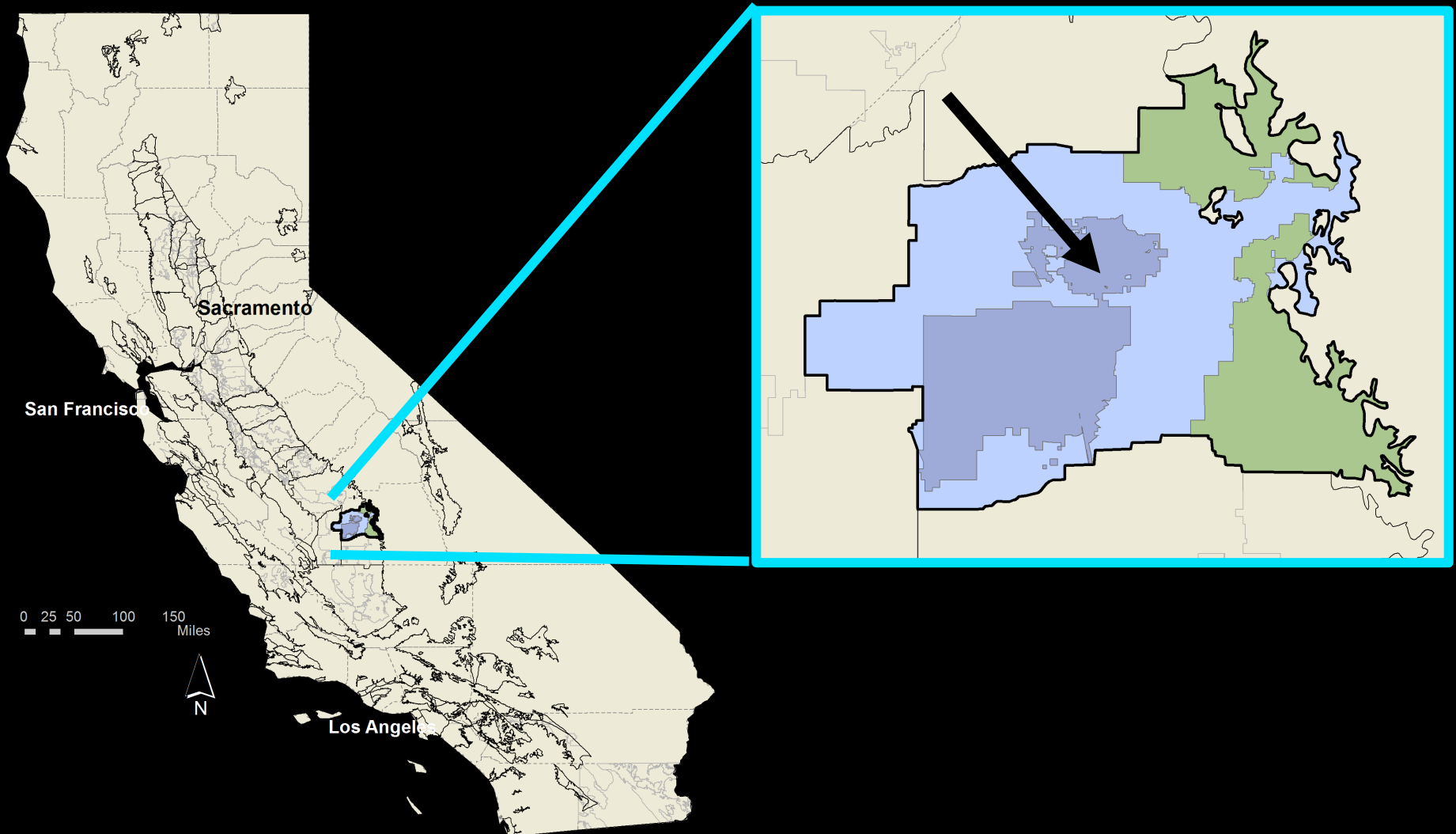
Tim O'Halloran

Yolo County Flood Control and Water Conservation District



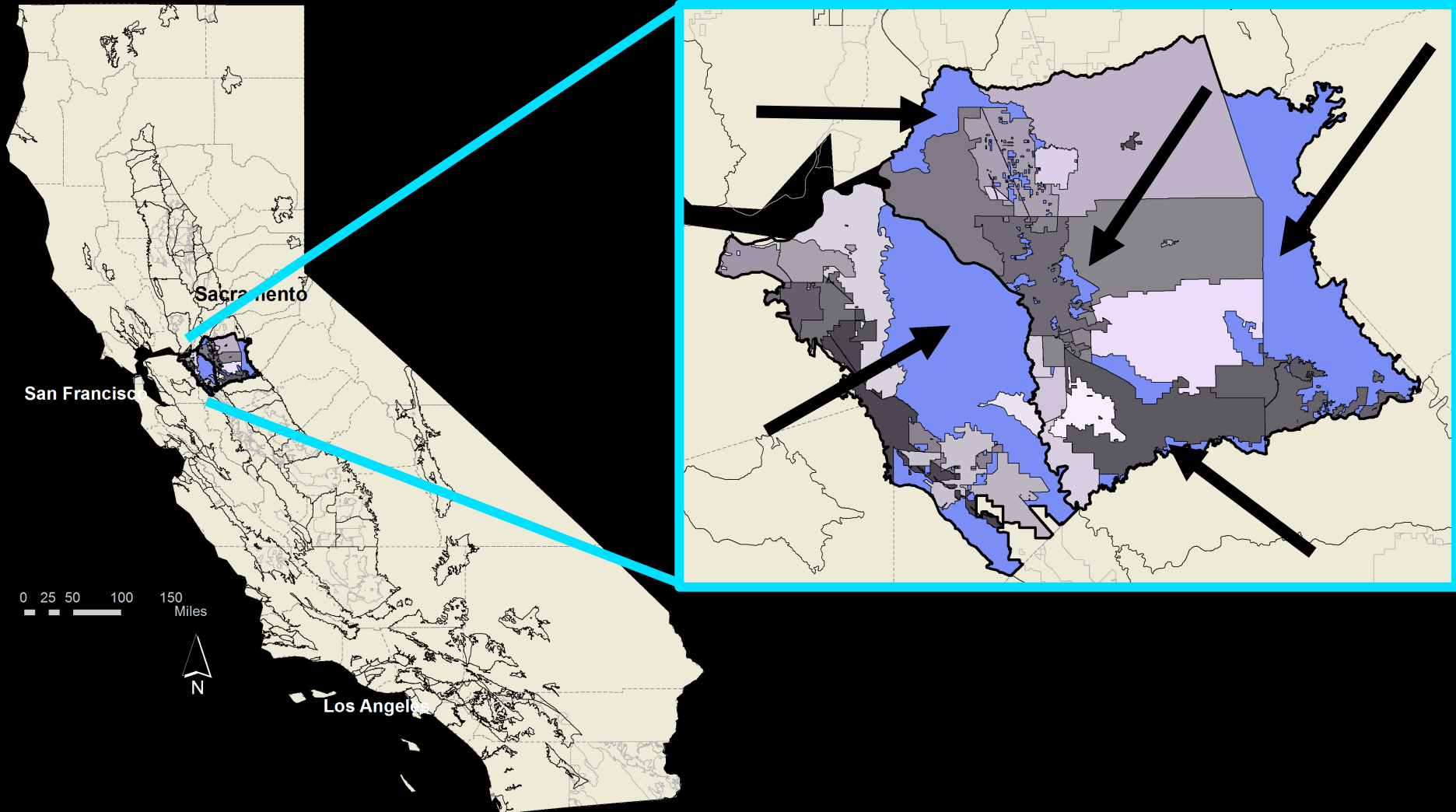
Paul Hendrix

Mid-Kaweah GSA



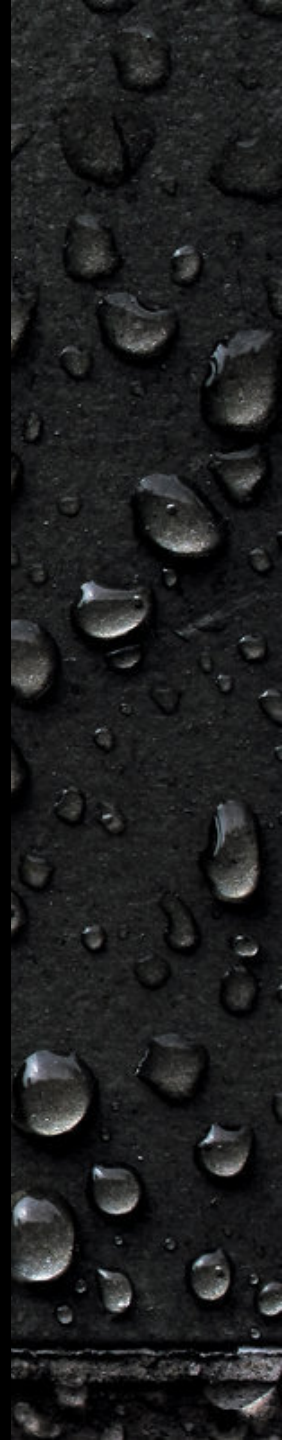
Brandon Nakagawa

San Joaquin County



Tasks for GSP Development

- Characterize your basin
- Jointly develop your sustainability goal, minimum thresholds, measurable objectives, and interim milestones
- Monitor your basin and coordinate data
- Implement management actions, projects, and programs, where applicable
- Engage beneficial users and other stakeholders in GSP development
- Fund basin management





Recommendations: Capacity

- List the existing programs, datasets, agencies and other resources
- Work with other programs or agencies to incorporate their expertise into GSPs in a meaningful way
- Don't reinvent the wheel: Use the state, universities, experienced consultants, and others
- Put together advisory board(s)
- Apply for grants, while developing your GSAs long-term funding plan

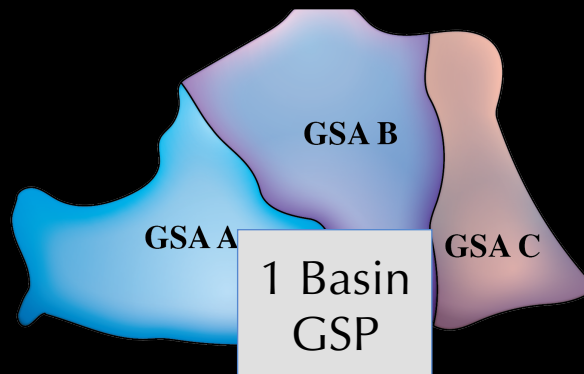
Recommendations: Coordination

- Identify with whom need to coordinate
- Develop active coordination mechanisms
- Plan for interoperability and data sharing

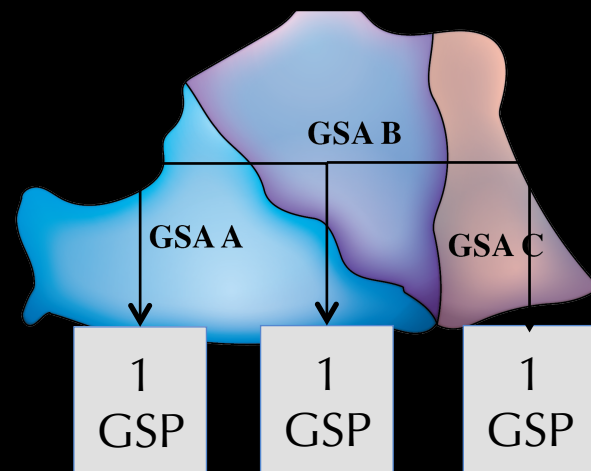
Coordination Needed



Coordination Needed



Coordination Required





Recommendations: Representation

- Consider not just who will participate, but how they will participate
- Determine what information will be disclosed
- Set up accountability mechanisms
- Reduce the potential for interest group competition

A dark, textured background covered with numerous water droplets of varying sizes, creating a reflective and organic pattern.

Governance entails designing and putting into practice process. It sets, communicates, and enforces norms and expectations.

Governance will affect how GSAs achieve the multitude of tasks required for GSP development and implementation.



Questions?