



**Coordination of the Many in the Subbasin**

DELTA-MENDOTA SUBBASIN  
COORDINATION

23

Groundwater Sustainability Agencies

6

Groundwater Sustainability Plans

9

Neighboring Subbasins

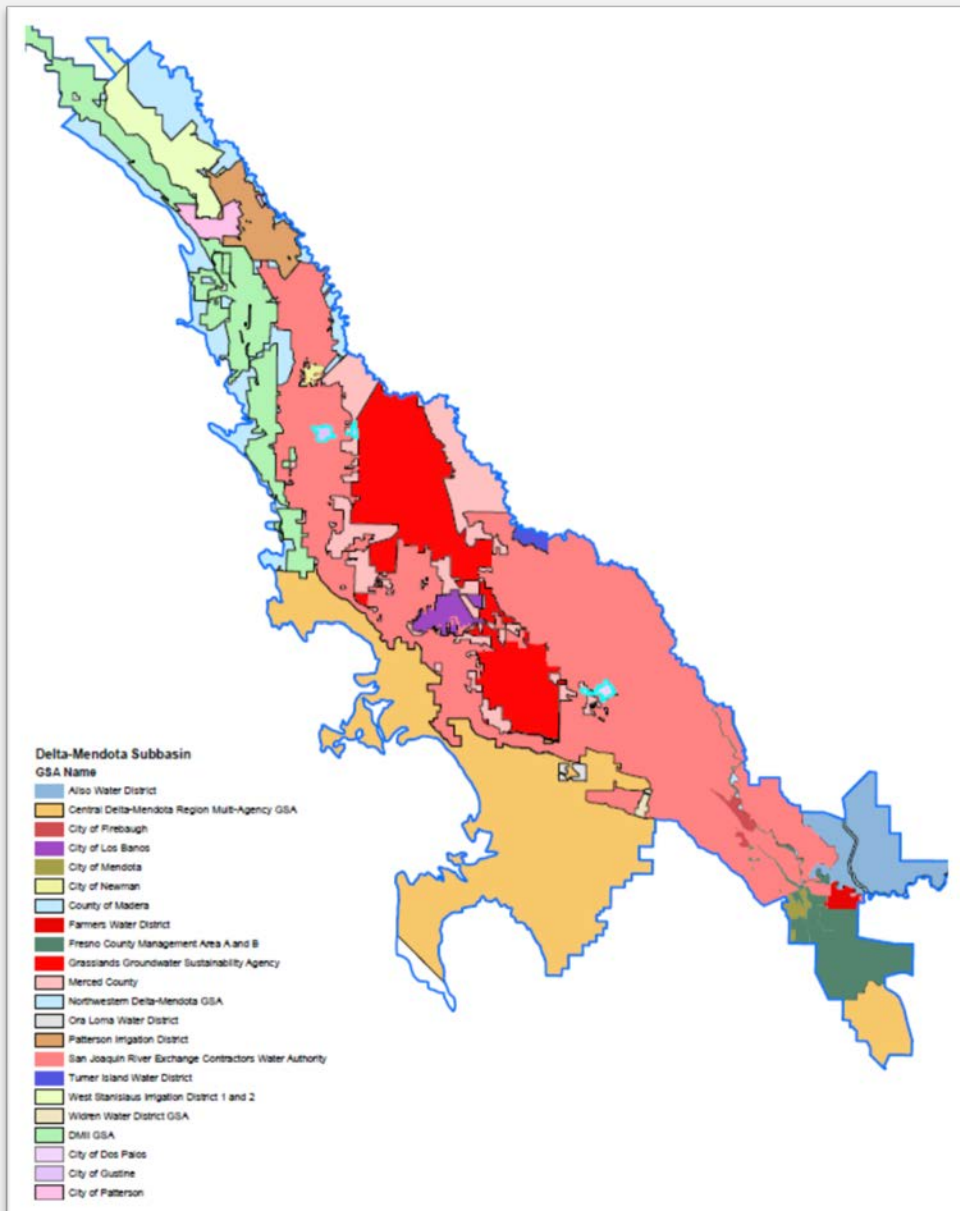
# GROUNDWATER SUSTAINABILITY AGENCIES

- Individual agency GSAs
- Multi-agency GSAs
- Most follow district/city boundaries
- Cities / Water & Irrigation Districts / DACs

• Counties fill “white areas”

## **SLDMWA Responsibilities**

- Coordinate 8 GSAs to develop single GSP

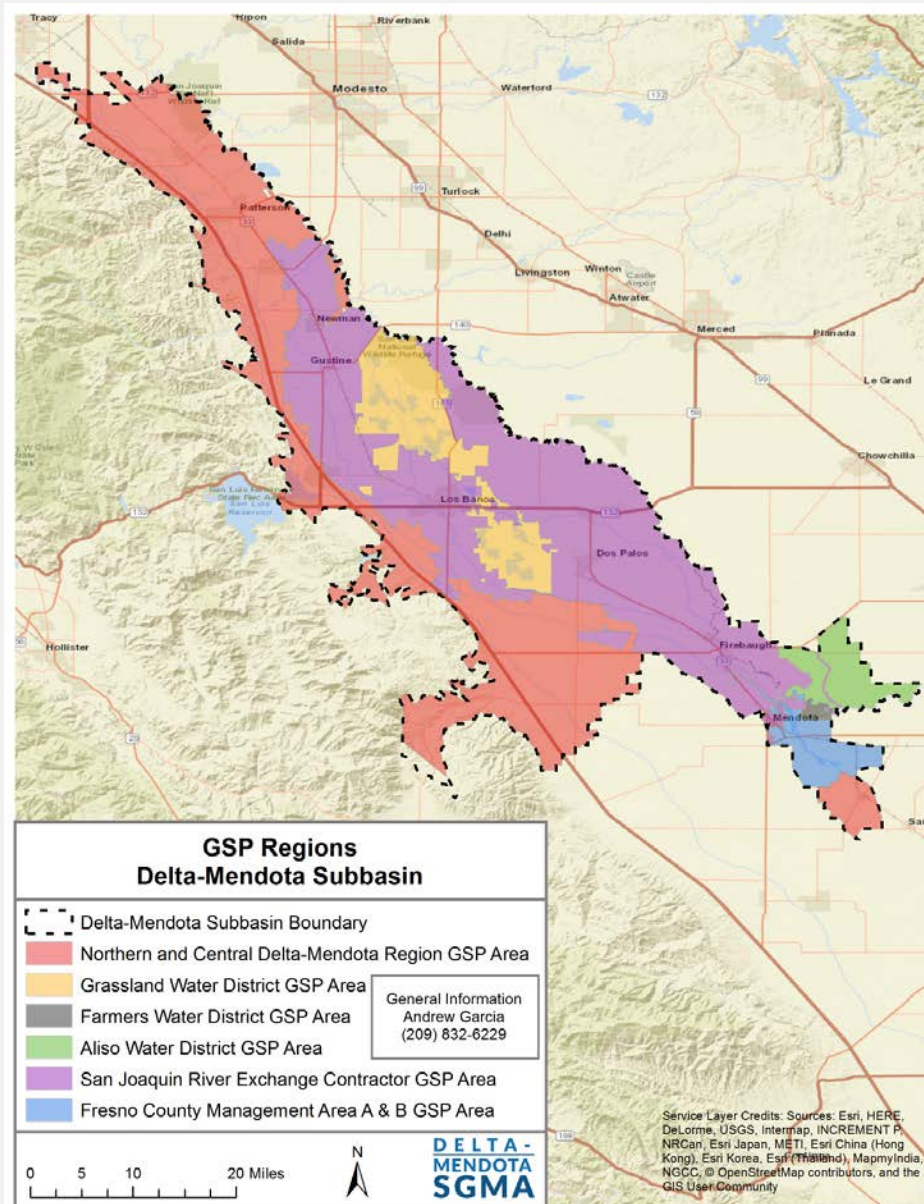




# GROUNDWATER SUSTAINABILITY PLANS

## SLDMWA Responsible to support Intrabasin Coordination

- Coordination of Six Subbasin GSPs
- Development of Subbasin Coordination Agreement
  - Facilitate Coordination Committee
- Coordinate Common Activities to save costs
  - Plan Manager



# Governance Structure

## Coordination Committee



Communications Workgroup

Technical Workgroup

North and Central  
Delta-Mendota  
Region GSP

SLDMWA

San Joaquin River  
Exchange  
Contractors GSP

Grassland  
GSP

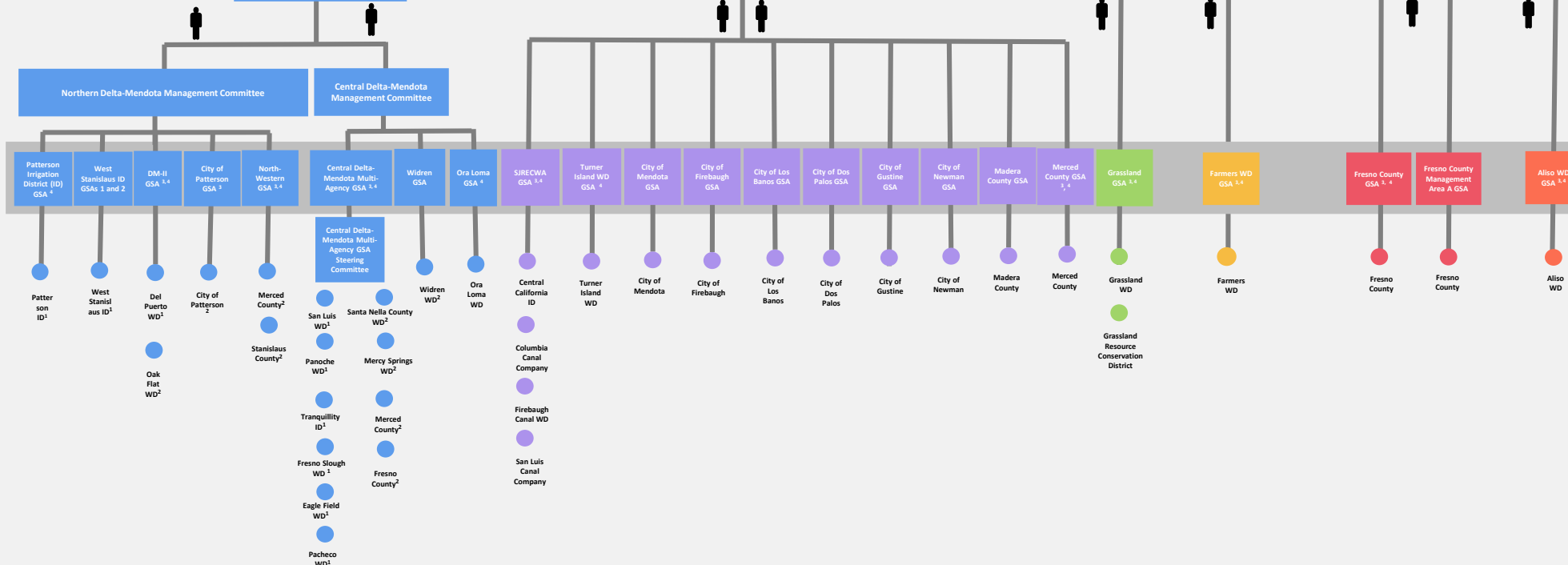
Farmers  
WD GSP

Fresno  
County GSP

Aliso  
WD GSP

**8 Member  
Coordination  
Committee**

**6 GSPs**



**23 GSAs**

**36 Coordination  
Agreement  
Parties**

# REGIONAL COORDINATION



## Interbasin Coordination

- 9 Neighboring Subbasins
- Regional Facilitation provided by DWR
  - Regional Issues (Subsidence)
    - Various Model types
- Various GSP Development timelines
  - Past Issues / Relationships