

# Groundwater Management and Land Use Planning Under the Sustainable Groundwater Management Act

Tara Moran

Water in the West, Stanford University  
tamoran@stanford.edu

GRA GSA Summit 2018  
June 7, 2018









Image from: Joanna Nurmis,  
Stanford University





Image from: Chris Austin



# Land Use Requirements

1. If a general plan is adopted or substantially amended, a GSA must provide (GC 65352.5):
  - a. Planners with the current GSP
  - b. A report detailing the anticipated impacts of the general plan on GSP implementation
2. GSPs must account for existing general plan assumptions (CWC 10726.9)

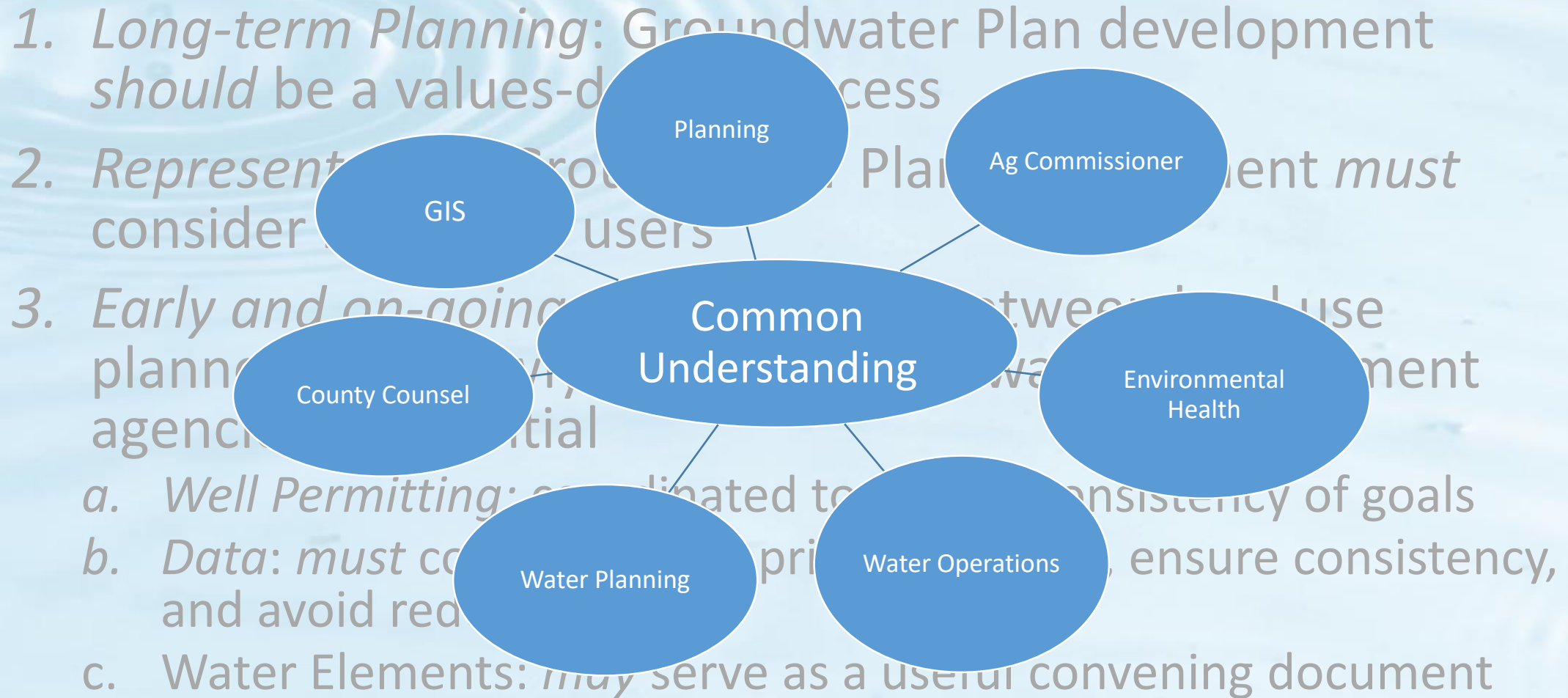


Figure from: DWR

# Key Findings: Uncommon Dialogue

1. *Long-term Planning*: Groundwater Plan development *should* be a values-driven process
2. *Representation*: Groundwater Plan development *must* consider beneficial users
3. *Early and on-going coordination*: between land use planners and newly formed groundwater management agencies is essential
  - a. *Well Permitting*: coordinate to ensure consistency of goals
  - b. *Data*: *must* coordinate to prioritize needs, ensure consistency, and avoid redundancy
  - c. *Water Elements*: *may* serve as a useful convening document

# Cross Functional Water "Superteam"



# Key Findings: Uncommon Dialogue

4. *Diversified approach*: basins will require a diversity of approaches achieve sustainability
5. *Basin-schmasin*: Your (and others) actions may have unintended consequences
6. *Tools and Resources*: are necessary and helpful, but must have an existing foundation



# Acknowledgments



Tara Moran

[tamoran@stanford.edu](mailto:tamoran@stanford.edu)