



# GROUNDWATER SUSTAINABILITY AGENCY (GSA) FORMATION UPDATE



**25<sup>th</sup> GRA Annual Meeting  
Concord, CA**

**September 28, 2016**

**Mark S. Nordberg, PG  
Senior Engineering Geologist  
*DWR's Sustainable Groundwater  
Management Branch***



# Presentation Overview

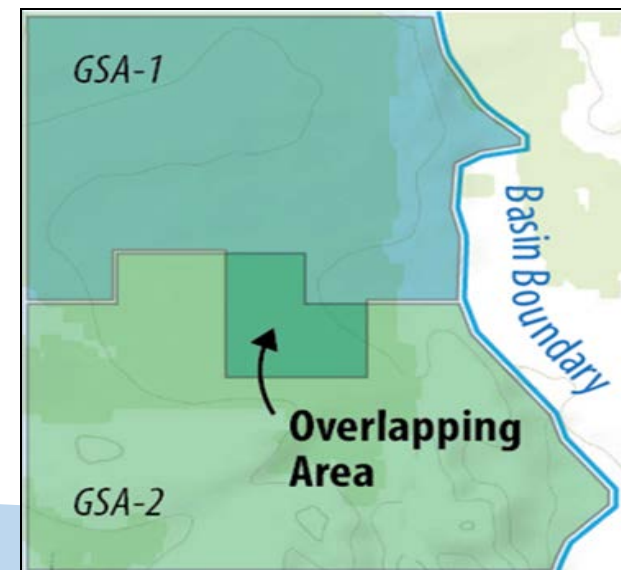
- Status of GSAs
- GSA Formation Examples
- Update on Basin Boundary Modifications
- Information About State Board Intervention
- GSA Web-Based Tool



# Status of GSA Formations

[http://water.ca.gov/groundwater/sgm/gsa\\_table.cfm](http://water.ca.gov/groundwater/sgm/gsa_table.cfm)

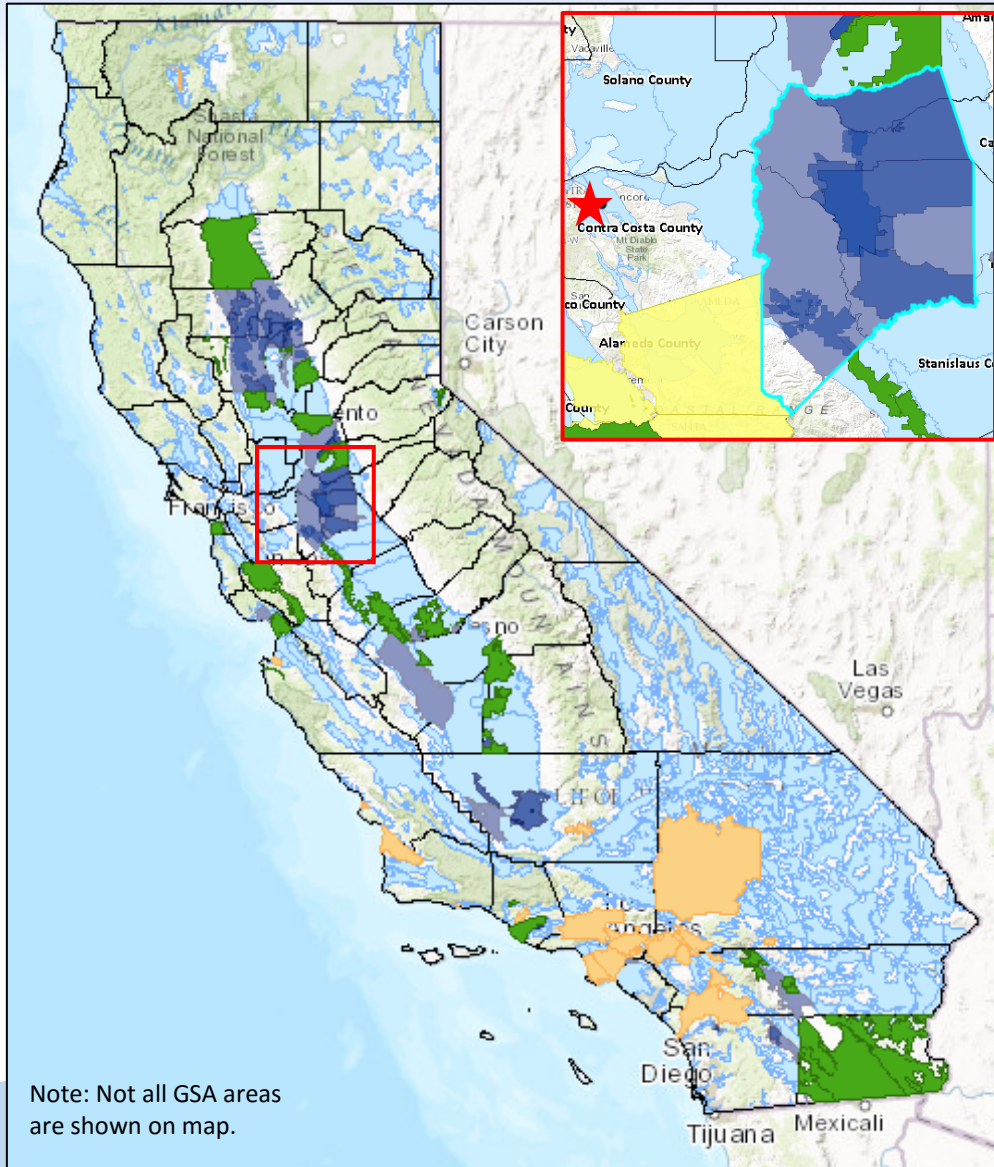
- **123** separate GSA notices have been submitted as of September 26, 2016.
  - **68** have overlap in one or more basins that must be resolved.
  - **37** are “Exclusive GSAs” in one or more basins.
  - **16** have an active 90-day period in one or more basins.
  - **2** are incomplete.
  - **6** are being reviewed.
- **78** basins have GSAs.
  - **47** basins are high- or medium-priority.
  - **31** basins are low- or very-low priority.
- **29** counties have GSAs.



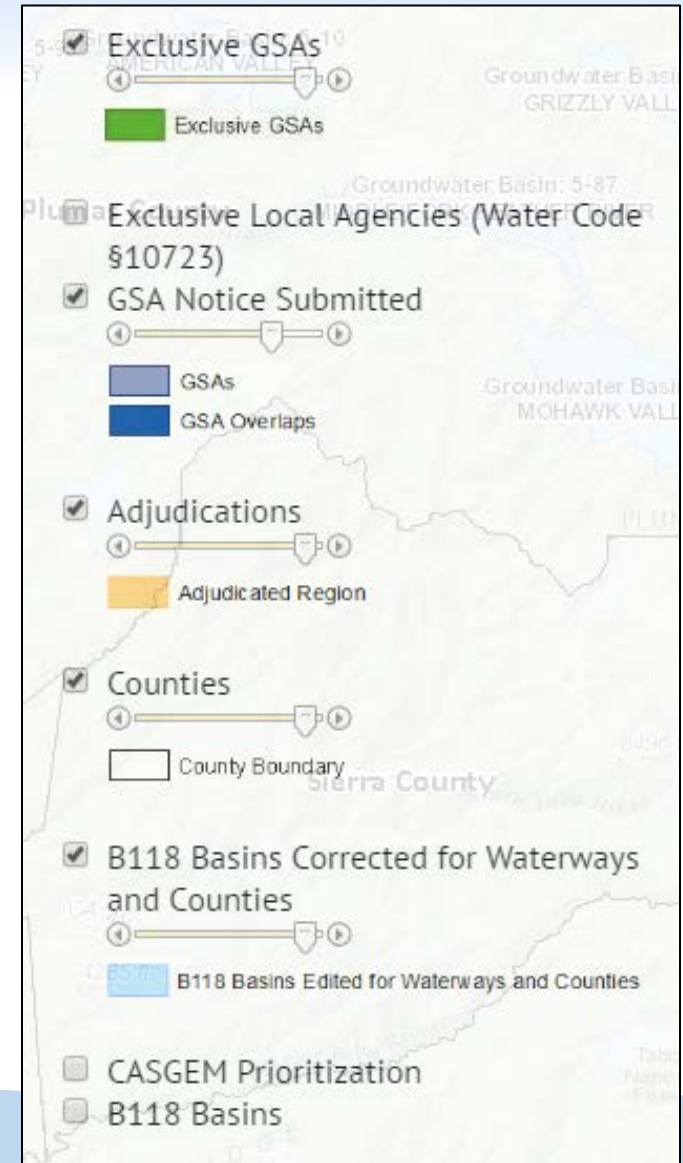


# Status of GSA Formations

[http://water.ca.gov/groundwater/sgm/gsa\\_map.cfm](http://water.ca.gov/groundwater/sgm/gsa_map.cfm)



Note: Not all GSA areas are shown on map.

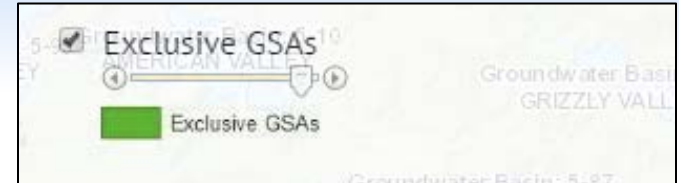
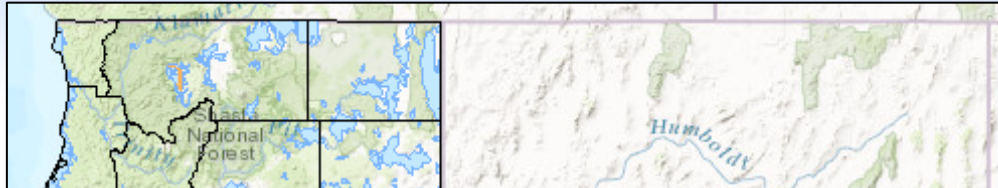






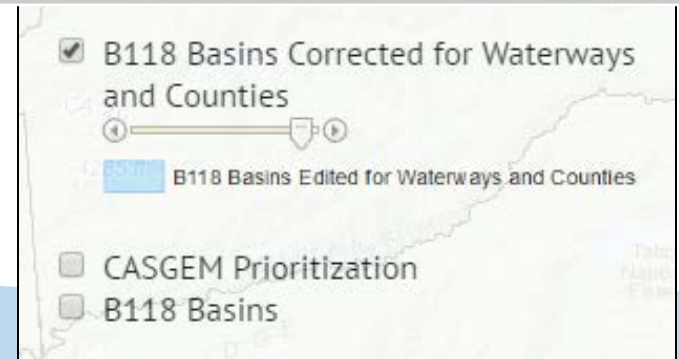
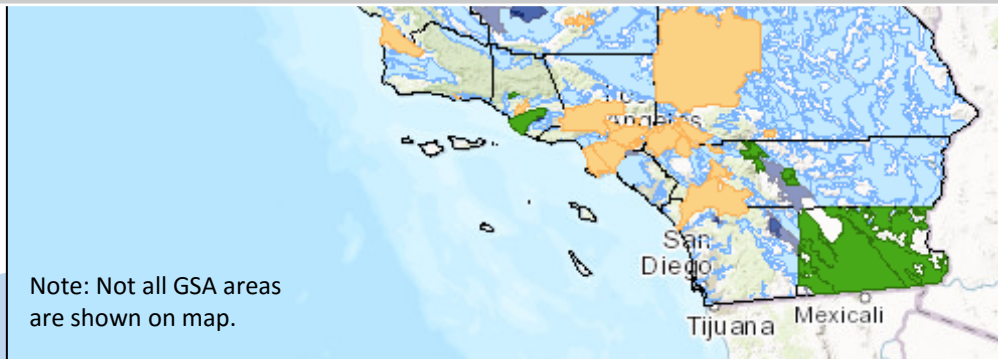
# Status of GSA Formations

[http://water.ca.gov/groundwater/sgm/gsa\\_map.cfm](http://water.ca.gov/groundwater/sgm/gsa_map.cfm)



Description	Area (acres)	Coverage
High & Medium Basins	19,223,500	100%
Adjudicated Areas	2,025,300	11%
GSAs Submitted	6,418,000	33%
Exclusive GSAs	2,492,000	13%

Note: Calculations are approximate and do not reflect recently submitted GSA notices.



Assistance to Locals

# Facilitation Support Service



18 contracts  
> \$1 million  
committed by DWR  
\*funded by SWRCB





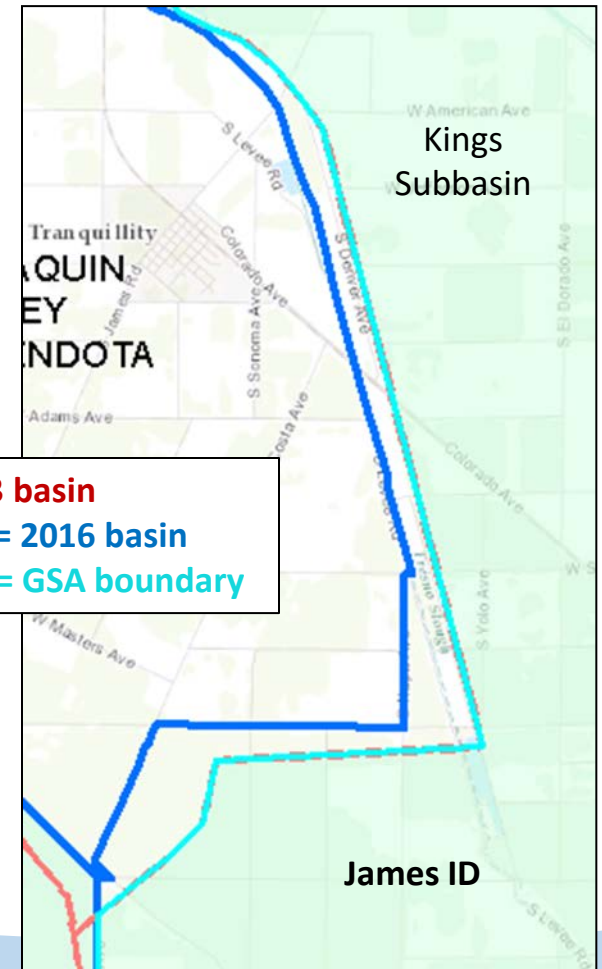
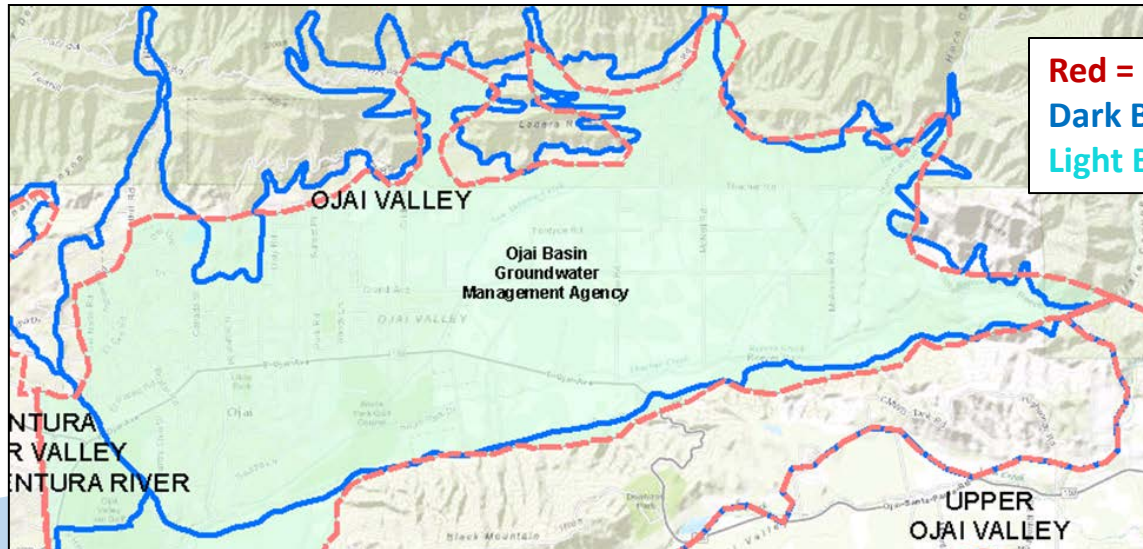
# GSA Formation Examples

- Many local agencies have submitted GSA notices involving multiple basins and counties.
- Some local agencies are submitting multiple notices for separate areas in the same basin.
- Approximately 60% of the notices received have overlap in one or more basins.
  - The decision to become a GSA does not “take effect” until the overlap is resolved – §10723.8(c)
  - A GSA will only be determined “exclusive” within the service area boundaries of the local agency(s) – §10723.8(d)
- Some local agencies are forming GSAs outside of their service area boundaries – *these may be unmanaged areas.*



# Existing GSA Areas vs. 2016 Basin Boundaries

- 2016 boundaries available soon!
- DWR has plotted existing GSA areas on 2003 B-118 boundaries and modified 2016 boundaries.
- Numerous GSA notices are affected by a boundary modification.







# Why June 30, 2017?

## **Water Code §10735.2.**

*(a) The board, after notice and a public hearing, may designate a high- or medium-priority basin as a probationary basin, if the board finds one or more of the following applies to the basin:*

*(1) **After June 30, 2017**, none of the following have occurred:*

*(A) A local agency has decided to become a GSA that intends to develop a GSP for the entire basin.*

*(B) A collection of local agencies has formed a GSA or prepared agreements to develop one or more GSPs that will collectively serve as a GSP for the entire basin.*

*(C) A local agency has submitted an alternative that has been approved or is pending approval pursuant to Section 10733.6. If the department disapproves an alternative pursuant to Section 10733.6, the board shall not act under this paragraph until at least 180 days after the department disapproved the alternative.*



# What Happens After June 30, 2017?

- The State Board will determine:
  - Which basins are entirely covered by GSAs?
    - *Are any GSAs exceeding their service area boundaries?*
  - Are there local agencies that are “almost there?”
  - Are there any “white spaces” in basin?
  - Has the county opted in/out of its presumed GSA role?
- If unmanaged areas of a basin exist:
  - Groundwater extraction reporting requirements apply.
  - Fees may be assessed by the State Board.
  - The Board may designate the basin as probationary.
  - *See Water Code sections 1529.5 and 5200 et seq.*



# Coming Soon!

## GSA Web-Based Tool

- Local agencies will be required to upload the following:
  - Contact information (single- or multi-agency)
  - Legal documents forming the GSA (JPA, MOU, etc.)
  - Service area boundaries
  - Desired GSA boundaries
  - Resolutions made by local agencies or JPAs “deciding to become GSAs”
  - All applicable information in Water Code §10723.8
- GSA notices and areas can be managed/edited on-line
  - Admin privileges can be granted
- A new interactive map will be created to show GSA status
- Basin coverage statistics will be provided



# Groundwater Sustainability Agencies

The Sustainable Groundwater Management Act (SGMA) established a new structure for managing California's groundwater resources at a local level by local agencies. SGMA requires, by June 30, 2017, the formation of locally-controlled groundwater sustainability agencies (GSAs) in the State's high- and medium-priority groundwater basins and subbasins (basins). A GSA is responsible for developing and implementing a groundwater sustainability plan (GSP) to meet the sustainability goal of the basin to ensure that it is operated within its sustainable yield, without causing undesirable results. The [GSP Emergency Regulations](#) for evaluating GSPs, the implementation of GSPs, and coordination agreements were adopted by DWR and approved by the California Water Commission on May 18, 2016.

A GSP may be any of the following (*Water Code § 10727(b)*):

- A [single plan](#) covering the entire basin developed and implemented by [one GSA](#).
- A [single plan](#) covering the entire basin developed and implemented by [multiple GSAs](#).
- Subject to Water Code Section 10727.6, [multiple plans](#) implemented by [multiple GSAs](#) and coordinated pursuant to a [single coordination agreement](#) that covers the entire basin.

## DWR's Role in GSA Formation

**Senate Bill (SB) 13** changed DWR's role with respect to reviewing, posting, and tracking GSA formation notices. These changes relate to: notification completeness reviews; overlapping GSA boundaries; and service area boundaries. For more information see DWR's [GSA Frequently Asked Questions](#). Also, DWR developed and has revised its [GSA Formation Notification Guidelines for Local Agencies](#) which outlines the information that must be submitted by a local agency(s) after it decides to become or form a GSA(s). DWR will use these GSA guidelines to perform completeness reviews for all GSA notices filed after **January 1, 2016**. Only complete GSA formation notices will be posted on DWR's [GSA Formation Table](#) and included on DWR's [GSA Interactive Map](#). The following summarizes DWR's approach and responsibilities with respect to GSA formation:

- DWR shall post all complete GSA formation notices received on its website within 15 days of receipt. (*Water Code § 10723.8(b)*)
- A complete GSA formation notice includes all of the following (*Water Code § 10723.8(a)*):
  - ❑ Information that clearly shows the GSA formation notice was submitted to DWR within 30 days of the decision to become or form a GSA.
  - ❑ The service area boundaries, the boundaries of the basin or portion of the basin the agency intends to manage, and identification of any other agencies managing or proposing to manage groundwater within the basin.
  - ❑ A copy of the resolution or legal agreement forming the new agency.
  - ❑ A copy of any new bylaws, ordinances, or new authorities adopted by the local agency.
  - ❑ A list of interested parties developed pursuant to Water Code § 10723.2 and an explanation of how their interests will be considered in the development and operation of the GSA and the development and implementation of the agency's sustainability plan.
- DWR will not post incomplete GSA formation notices.
- If two or more local agencies separately decide to become GSAs in all or a portion of the same area of a basin and create overlap (within 90-days of the initial posted notice), then no exclusive GSA will be identified by DWR until the overlap is resolved. (*Water Code § 10723.8(c) and (d)*)
- Only exclusive GSAs can coordinate to develop a GSP for a basin and submit that GSP to DWR for review.
- DWR has a [Facilitation Support Services](#) program that helps local agencies work through challenging institutional and technical situations.
- If you have questions about a specific entity's GSA eligibility please contact the State Water Resources Control Board at [groundwater\\_management@waterboards.ca.gov](mailto:groundwater_management@waterboards.ca.gov).

DWR hosted a 90-minute webinar in November 2015 to address the SB 13 amendments to SGMA as they pertain to the formation of a GSA. The following information is available for use by local agencies and the public:

## GROUNDWATER HOME

### SUSTAINABLE GROUNDWATER MANAGEMENT

- » [Adjudicated Basin Reporting](#)
- » [Basin Boundary Modifications](#)
  - » [BBAT - Basin Boundary Assessment Tool](#)
  - » [BBMRS - Basin Boundary Modification Request System](#)
- » [Best Management Practices](#)
- » [Critically Overdrafted Basins](#)
- » [Communication and Outreach](#)
  - » [Advisory Groups](#)
  - » [Statewide SGMA Calendar](#)
  - » [Region Office Contacts](#)
  - » [Subscribe for Email Updates](#)
- » [Groundwater Sustainability Agencies](#)
  - » [GSA Formation Table](#)
  - » [GSA Interactive Map](#)
  - » [GSA Notice Revisions](#)
- » [Groundwater Sustainability Plan Regulations](#)
  - » [GSP Public Comments](#)
- » [Initial Basin Prioritization](#)
- » [Water Available For Replenishment](#)
- » [Resources](#)
  - » [Water Mgmt. Planning Tool](#)
  - » [SGWP Grant Program](#)
  - » [Facilitation Support Services](#)
  - » [SGMA Definitions](#)
  - » [Related Links](#)
  - » [SGM Archive](#)
- » [GROUNDWATER INFORMATION CENTER](#)
- » [CASGEM](#)
- » [BULLETIN 118](#)



## DWR Contacts:

Mark Nordberg

[Mark.Nordberg@water.ca.gov](mailto:Mark.Nordberg@water.ca.gov)

## DWR Regional Coordinators

- Mary Randall, NRO
- Hong Lin, NCRO
- Amanda Peisch-Derby, SCRO
- Brian Moniz, SRO

## State Board Contacts:

Erik Ekdahl

Sam Boland-Brien

[groundwater\\_management@waterboards.ca.gov](mailto:groundwater_management@waterboards.ca.gov)